

# POD

Place Of Dwelling

During the pandemic, we have all truly come to understand the value of our homes, this experience shed light on the fact that individuals without access to shelter are extremely vulnerable (now more than ever). Our goal was to design and build a prototype home for one or more homeless individual(s) living in Newark, NJ. POD (Place of Dwelling) is designed to be affordable, adaptable, replicable and responsive to climate concerns. POD is designed to be implemented in a variety of orientations and site conditions throughout the city.

The design consists of a superstructure and a dwelling unit. The superstructure is designed to be able to accommodate multiple pods under a single roof. While the structure, which includes the foundation/bypass beams, trusses, roof, and the dwelling unit can be disassembled and moved on a flatbed truck. The interior of the dwelling unit is designed to give the occupant a sense of ownership with a flexible cleat system that allows for optimal use of the 86 sq.ft. space. The hope is that this one unit can be aggregated to form a community and continue to fight homelessness in the City of Newark and beyond.

UNDERSTANDING HOMELESSNESS

NUMBER OF HOMELESS PERSONS IN THE UNITED STATES

580,466

NUMBER OF HOMELESS PERSONS IN NEW JERSEY

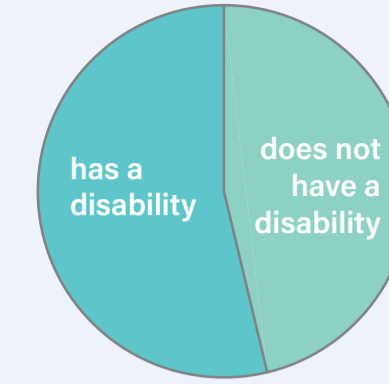
9,662

15th highest in the nation

NUMBER OF HOMELESS PERSONS IN NEWARK, NJ

1,859

highest homeless population in the state



21% OF HOMELESS PERSONS ARE HOMELESS BECAUSE THEY WERE ASKED TO LEAVE THEIR SHARED RESIDENCE.

UNDERSTANDING DEMOGRAPHICS and USERS

LONG TERM HOMELESSNESS (ADA)



HOUSING FOR CHRONICALLY HOMELESS INDIVIDUALS

- MUST COMPLY WITH ADA GUIDELINES
- FURNITURE AND OBJECTS SHOULD BE EASILY ACCESSED

DOMESTIC VIOLENCE SURVIVORS



HOUSING FOR DOMESTIC VIOLENCE SURVIVORS

- SPACE FOR INFANTS / YOUNGER CHILDREN
- FLEXIBILITY TO ACCOMMODATE 3 INDIVIDUALS

PARTNERS



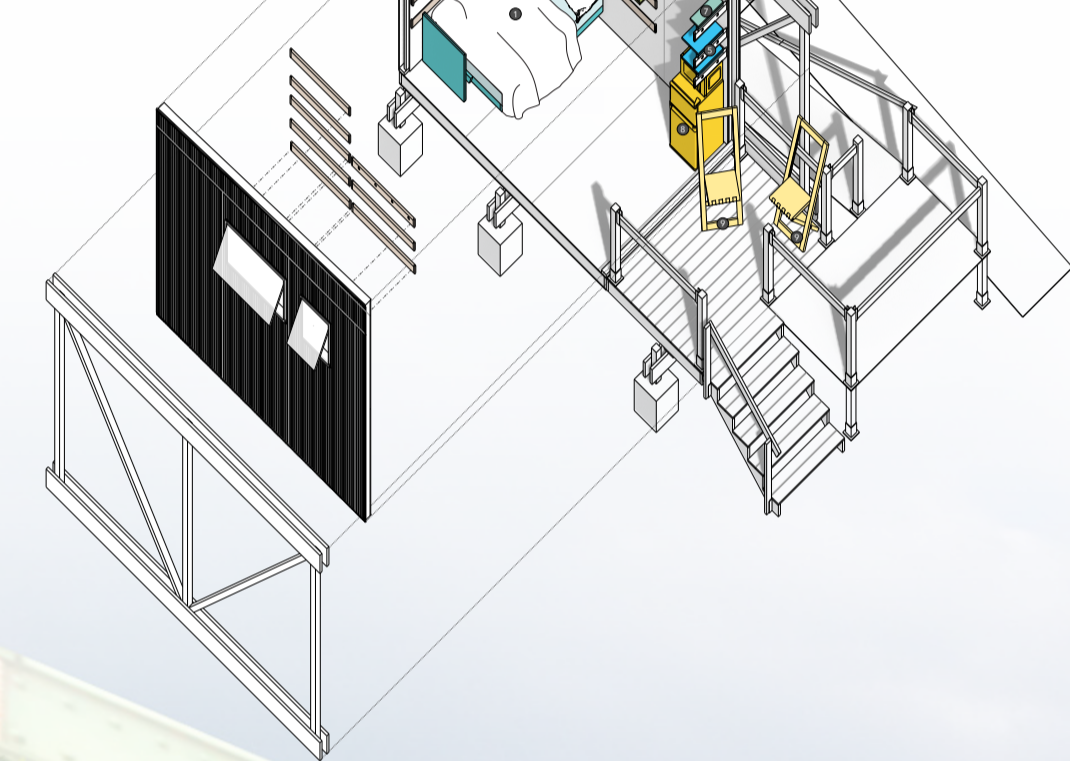
HOUSING FOR ROOMMATES, FAMILIES, OR ROMANTIC PARTNERSHIPS

- MUST HAVE AT LEAST 2 BEDS
- FLEXIBILITY TO ADAPT TO DIFFERENT TYPES OF HOUSING MATES

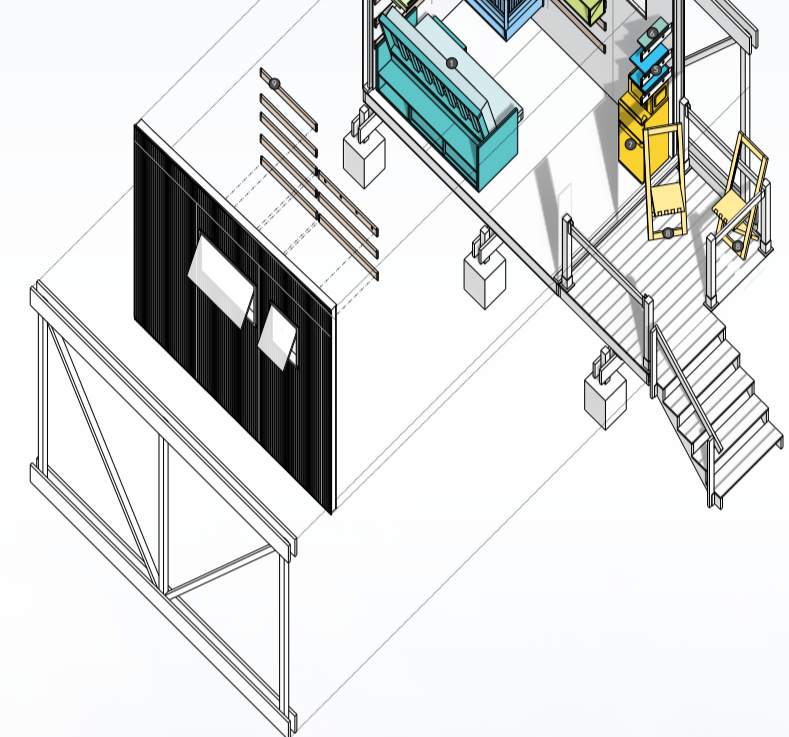
LAYOUTS and CONFIGURATIONS

After we identified the user groups, we looked to develop a flexible, customizable system to accommodate the different user types and individuals we envision occupying the space. We developed a cleating system and an accompanying suite of furniture to fit the space - along with a series of layouts specific to the user types.

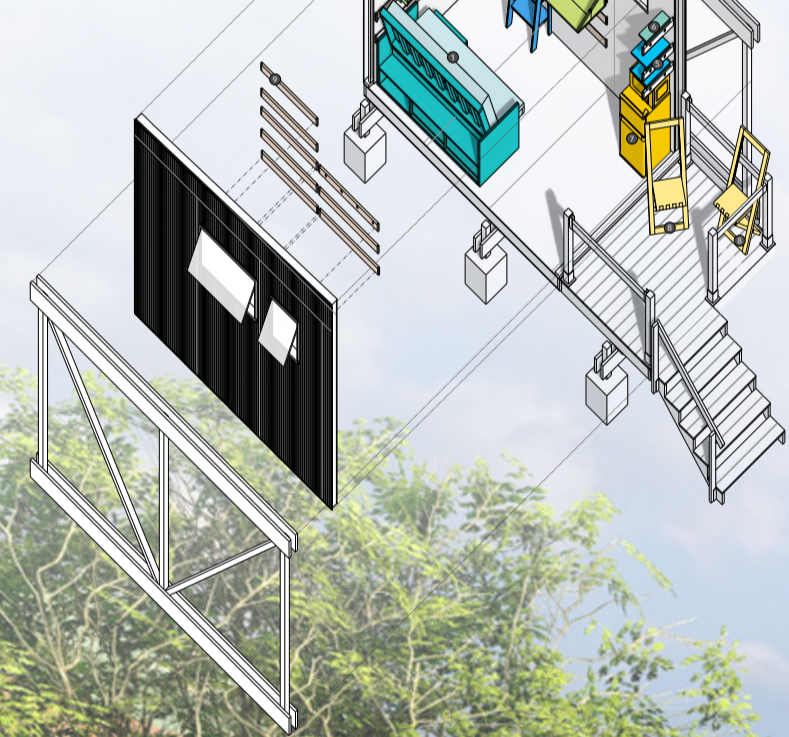
LONG TERM HOMELESS (ADA) LAYOUT



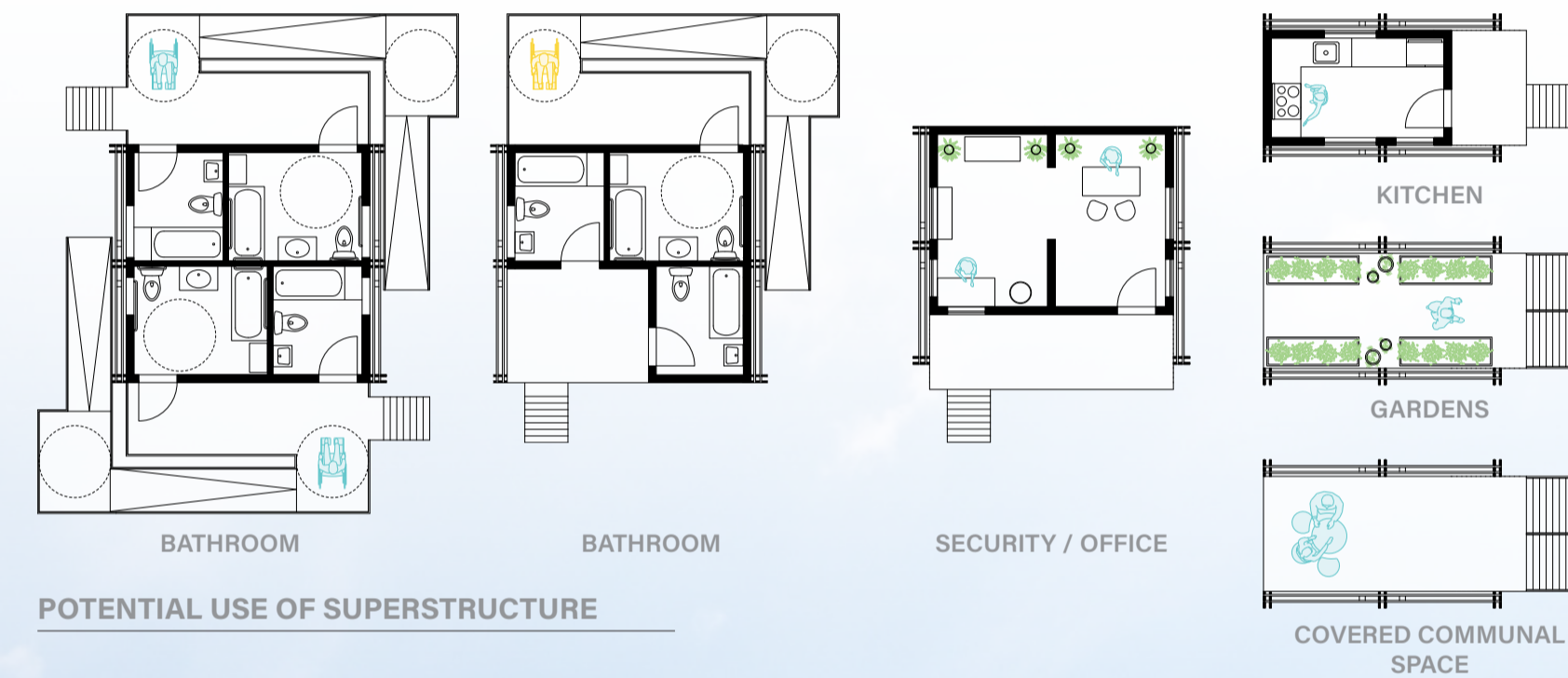
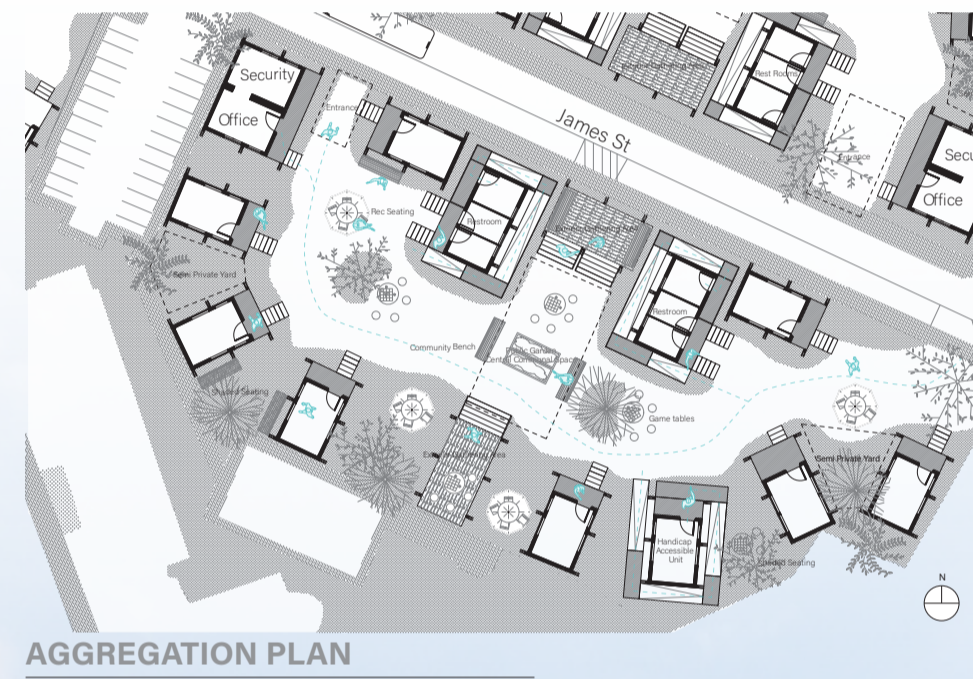
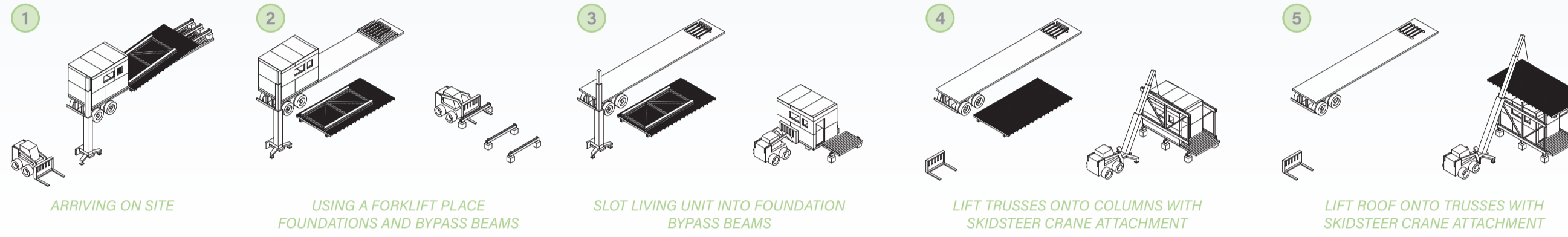
DOMESTIC VIOLENCE SURVIVORS LAYOUT



PARTNER LAYOUT



MOVEMENT and RELOCATION and AGGREGATION and POTENTIAL FUTURE



DESIGN - BUILD PROTOTYPE

