

TEVOSOL E.V.O.S.S. Lung Device

E.V.O.S.S. | Ex-Vivo Organ Support System

EVOSS is a medical device created to facilitate the transplant of human lungs. EVOSS is the first organ support system to provide conditions almost identical to that of a healthy human body for donor lungs during transport. With EVOSS, donated human lungs en route to recipients remain warm, alive and breathing.



TEVOSOL E.V.O.S.S. Lung Device

Device Overview



TEVOSOL E.V.O.S.S. Lung Device

Consumable Area – Side Panel Removed

Removable lid

Consumables docked into durable base

Organ chamber

Bronch-port/airway access

Sample ports

Sensor/instrumentation connectors

Heat exchanger

Oxygenator

Folding transport handle

PA line

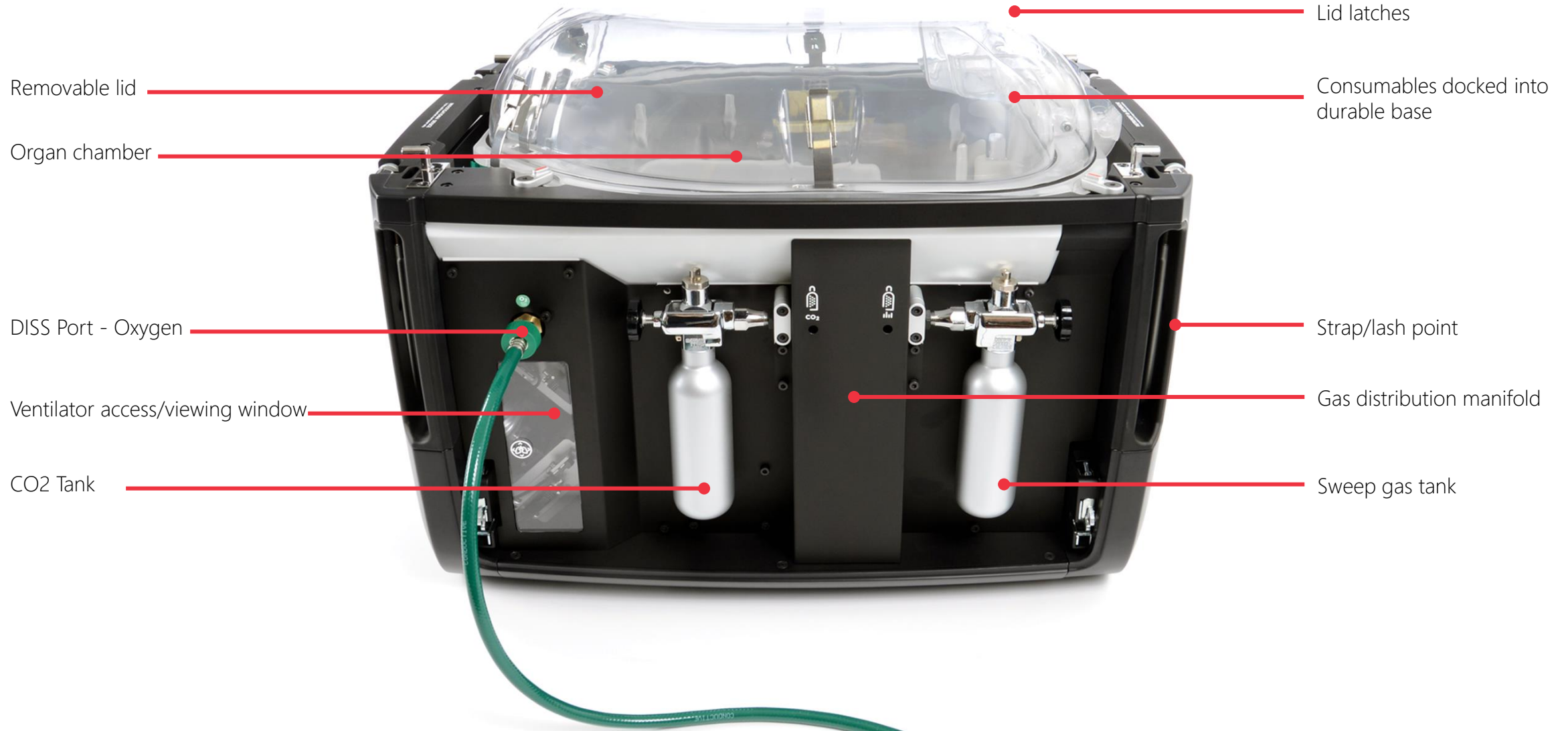
Filter retainer latch

HEPA/HME filter bank



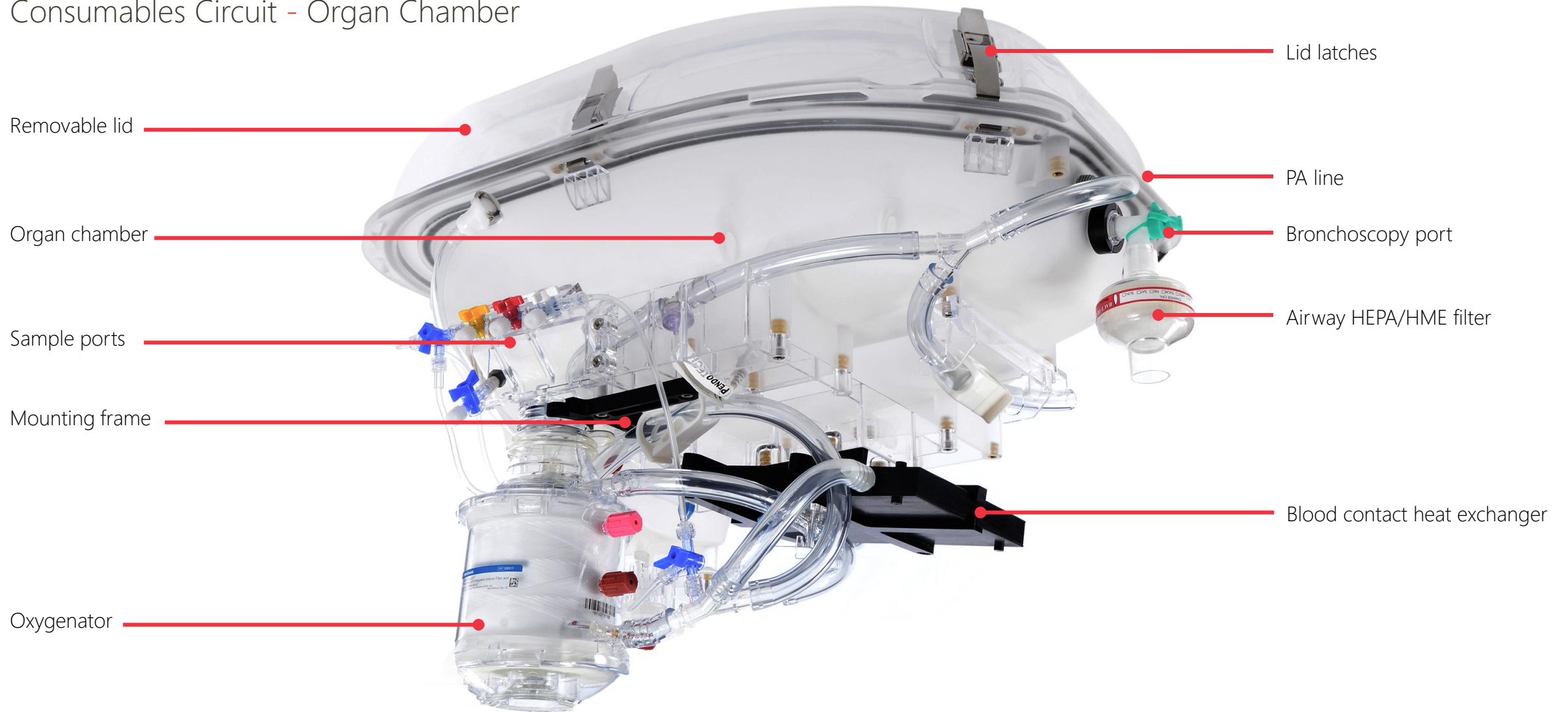
TEVOSOL E.V.O.S.S. Lung Device

Gas Distribution Area – Side Panel Removed



TEVOSOL E.V.O.S.S. Lung Device

Consumables Circuit - Organ Chamber



TEVOSOL E.V.O.S.S. Lung Device

System Overview



TEVOSOL E.V.O.S.S. Lung Device

System Overview – Carrying Handles Folded + Deployed



TEVOSOL E.V.O.S.S. Lung Device

System Overview – Lid Attached + Lid Removed



TĒVOSOL E.V.O.S.S. Lung Device

Functional Icons – Tablet UI + Product Graphics



TĒVOSOL E.V.O.S.S. Lung Device

Design Research – Contextual Research Imagery



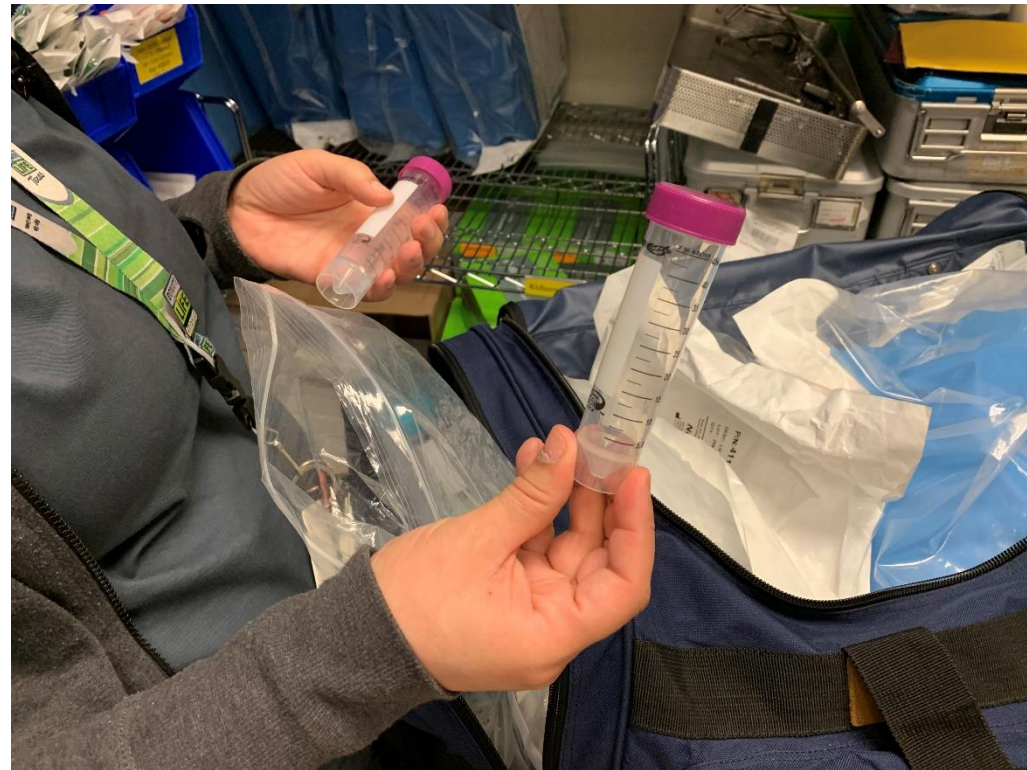
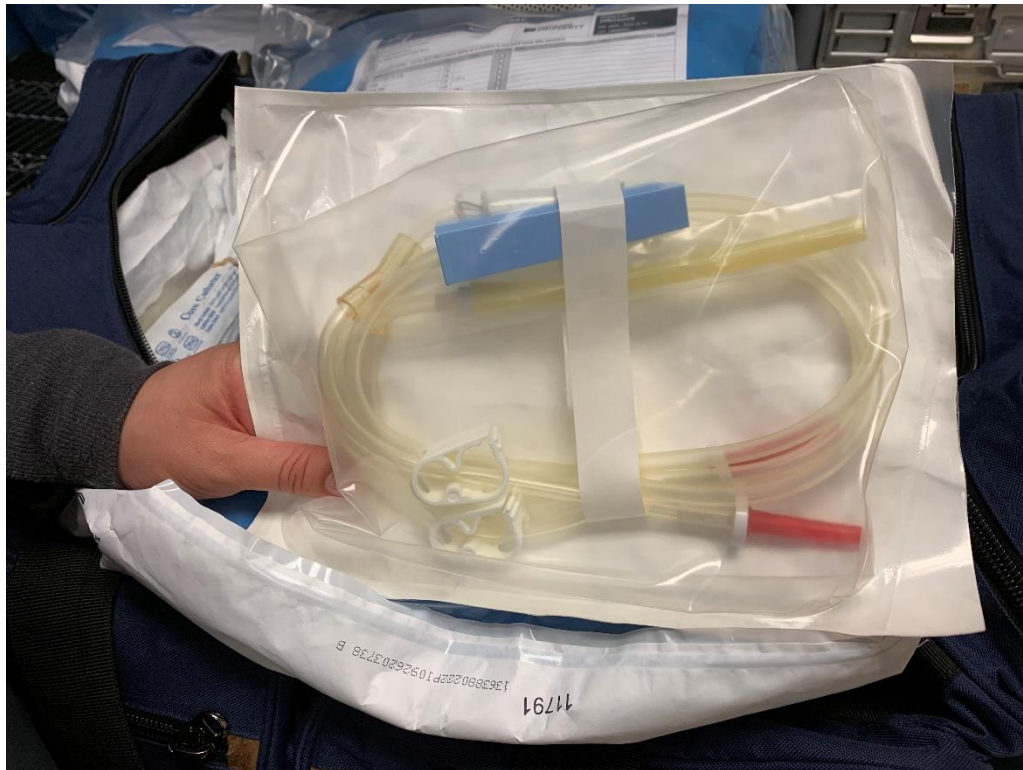
TEVOSOL E.V.O.S.S. Lung Device

Design Research – Contextual Research Imagery



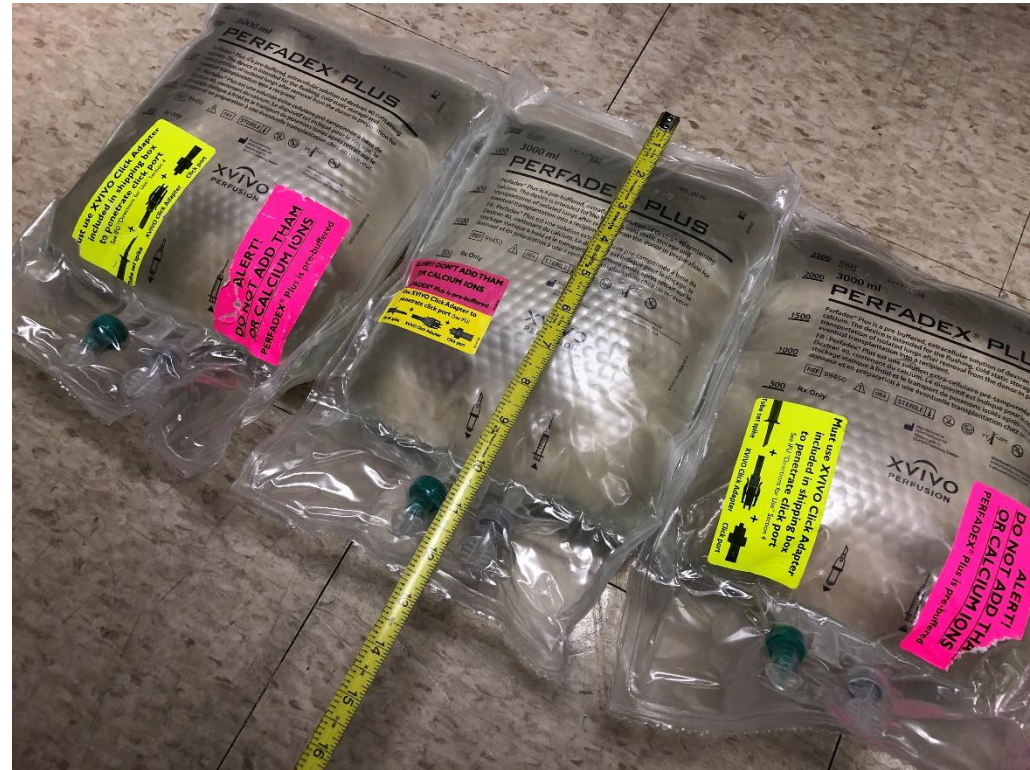
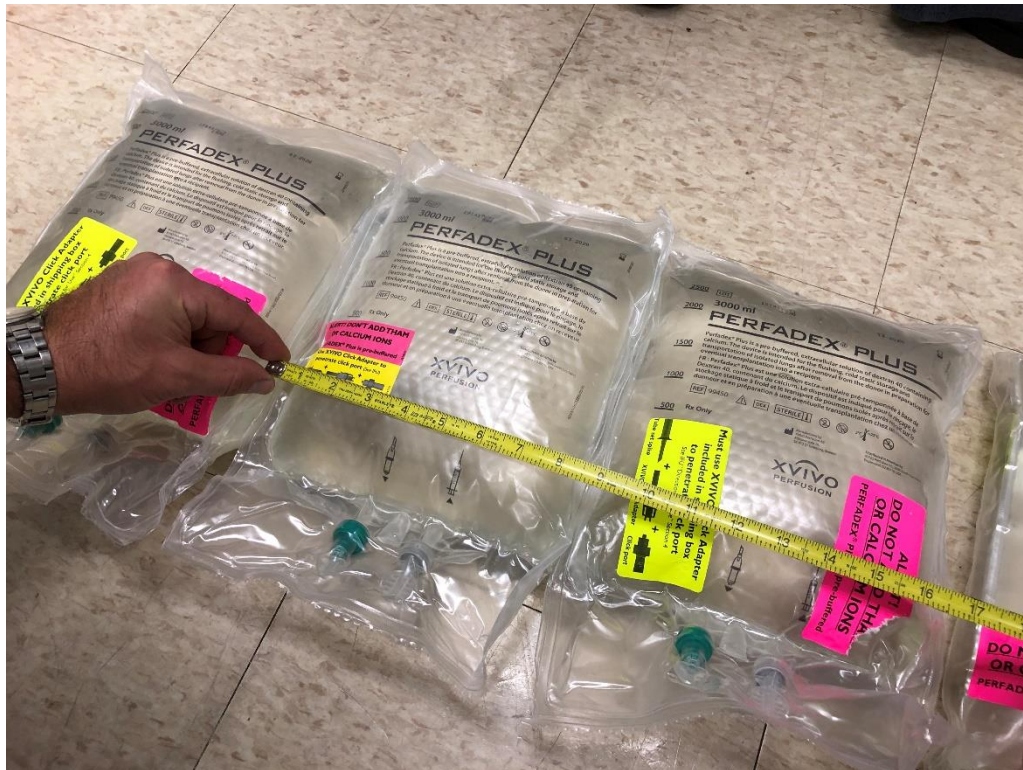
TEVOSOL E.V.O.S.S. Lung Device

Design Research – Contextual Research Imagery



TEVOSOL E.V.O.S.S. Lung Device

Design Research – Contextual Research Imagery



TEVOSOL E.V.O.S.S. Lung Device

Design Research – Contextual Research Imagery



TEVOSOL E.V.O.S.S. Lung Device

Design Research – Contextual Research Imagery – Handling Mock-Up Review



TEVOSOL E.V.O.S.S. Lung Device

Design Research – Contextual Research Imagery – Handling Mock-Up Review



TEVOSOL E.V.O.S.S. Lung Device

Design Research – Contextual Research Imagery – Handling Mock-Up Review



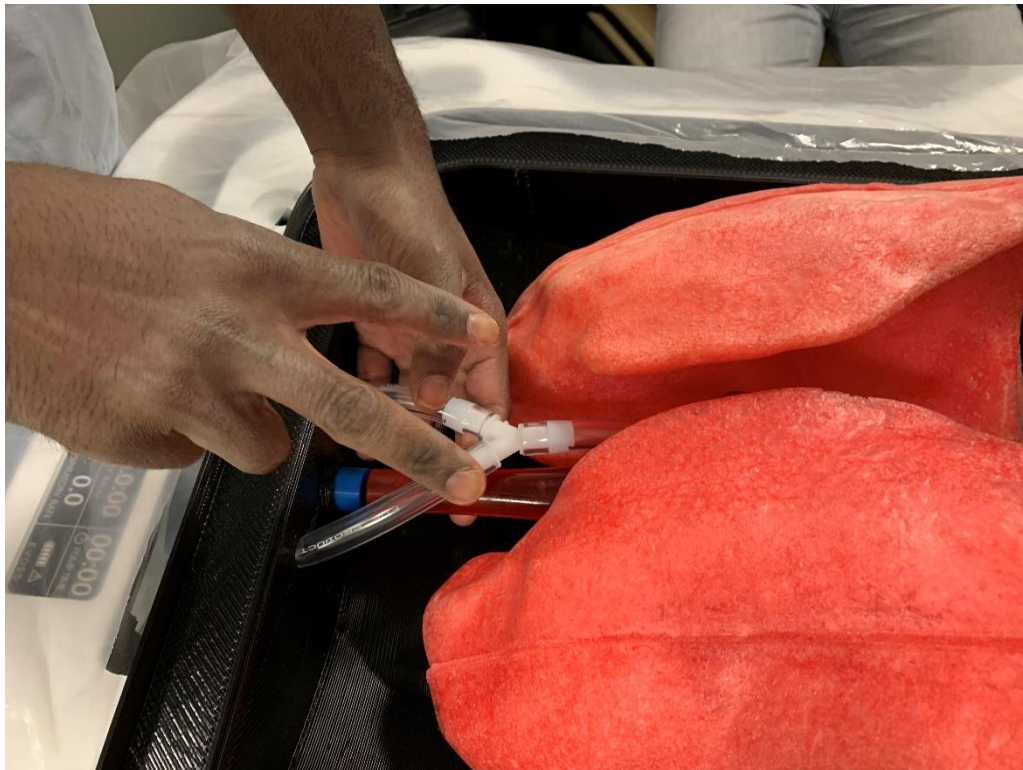
TEVOSOL E.V.O.S.S. Lung Device

Design Research – Contextual Research Imagery – Handling Mock-Up Review



TEVOSOL E.V.O.S.S. Lung Device

Design Research – Contextual Research Imagery – Handling Mock-Up Review



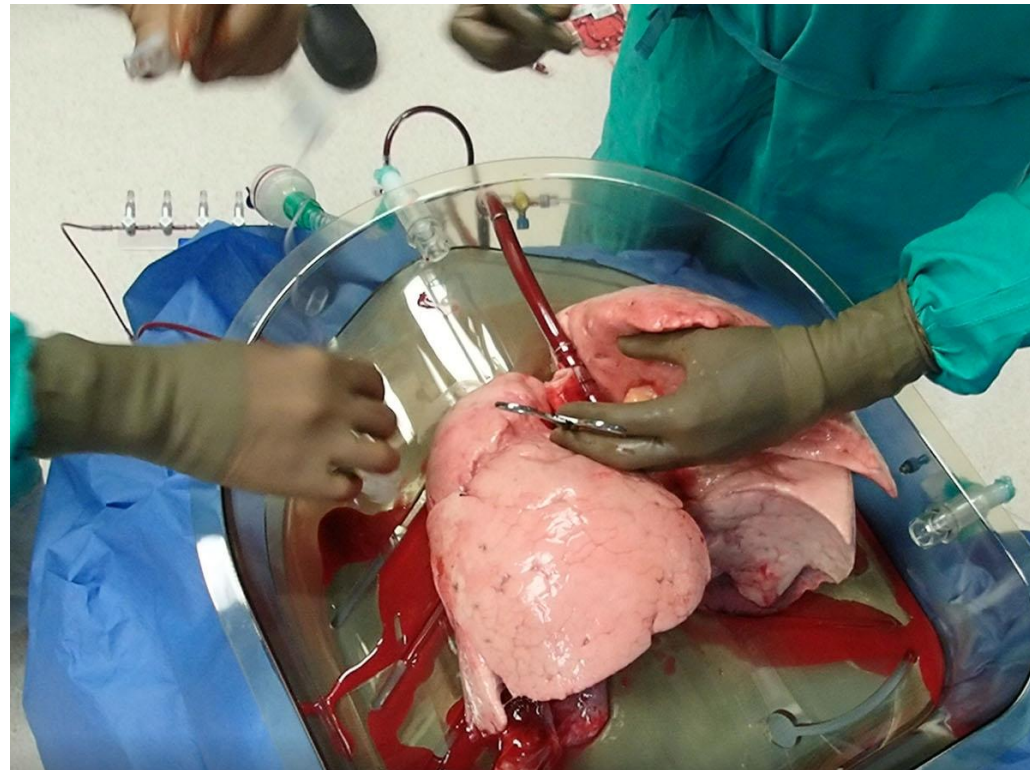
TEVOSOL E.V.O.S.S. Lung Device

Design Research – Contextual Research Imagery – Organ Procurement – Workflow Assessment



TEVOSOL E.V.O.S.S. Lung Device

Design Research – Contextual Research Imagery – Organ Procurement – Workflow Assessment



TEVOSOL E.V.O.S.S. Lung Device

Design Research – Contextual Research Imagery – Device Transit



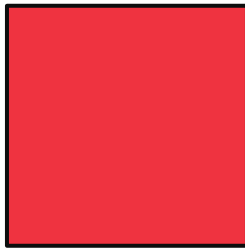
TEVOSOL E.V.O.S.S. Lung Device

Colors Materials + Finishes



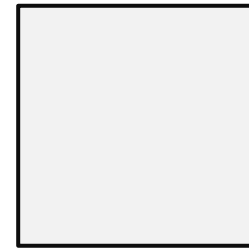
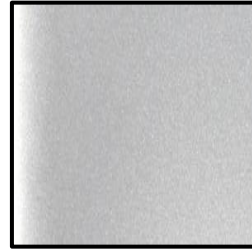
MATTHEWS PAINT
MP 20306
Patinated Bronze
Metallic
Matte Metallic
LRV 9

Top Coat Color



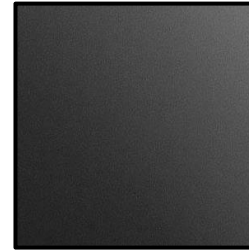
MATTHEWS PAINT
MP 08860
Pandora Matte
LRV 20.4

TEVOSOL RED



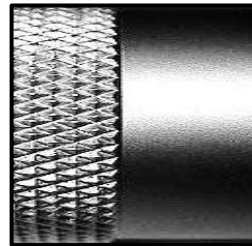
MATTHEWS PAINT
MP 27386
Verizon White Matte
LRV 89.5

Interior Color



MICRO BEAD
BLAST BLACK
ANNODIZED
ALUMINUM

Latch + Handle
Finish



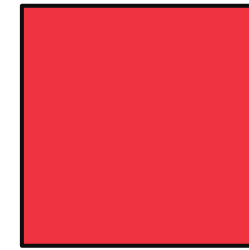
MICRO GLASS
BEAD BLAST
CLEAR
ANNODIZED
ALUMINUM

Handle Finish



Acrylic Sheet
Acrycast SX
2015 Gray or
Similar

Document
Compartment Lid



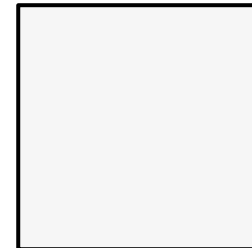
PANTONE Red 032 C
RGB 239 51 64
HEX/HTML#E33340
CMYK 0 90 76 0

TEVOSOL PANTONE



RAL 9017
Traffic Black
MT 11010 Texture

Exterior Base Color



RAL 9016
Traffic White
MT 11010 Texture

Interior Base Color

TEVOSOL E.V.O.S.S. Lung Device

Colors Materials + Finishes



MICRO GLASS BEAD
BLAST CLEAR
ANNODIZED
ALUMINUM



MICRO GLASS BEAD
BLAST BLACK
ANNODIZED
ALUMINUM

Potential Latch +
Hardware Finish



MICRO GLASS BEAD
BLAST CLEAR
ANNODIZED
ALUMINUM



MATTHEWS PAINT
MP 20306
Patinated Bronze
Metallic
Matte Metallic
LRV 9

Top Coat Color



MATTHEWS PAINT
MP 08860
Pandora Matte
LRV 20.4

TEVOSOL RED

TEVOSOL E.V.O.S.S. Lung Device

Colors Materials + Finishes



MICRO GLASS BEAD
BLAST CLEAR
ANNODIZED
ALUMINUM



MICRO GLASS BEAD
BLAST BLACK
ANNODIZED
ALUMINUM

Potential Latch +
Hardware Finish



MICRO GLASS BEAD
BLAST CLEAR
ANNODIZED
ALUMINUM



MATTHEWS PAINT
MP 20306
Patinated Bronze
Metallic
Matte Metallic
LRV 9

Top Coat Color