



ELEPSY



UMEÅ INSTITUTE OF DESIGN
UMEÅ UNIVERSITY

Vegetables and Fruits

Disinfect, Cleanse & Dry

Final Presentation, October 2020, Umeå

Sinan Altun, Yilin Lyu, Yuchen Lan

Elepsy - Disinfect, Cleanse & Dry

Brief & Persona

*Our persona enjoys eating raw & healthy food but she feels anxious and concerns about the pesticides and contamination on it. She seeks for a simple and safe solution to **disinfect**, **cleanse**, and **dry** these foods easily in home environment.*



*Loves spending
time in home*



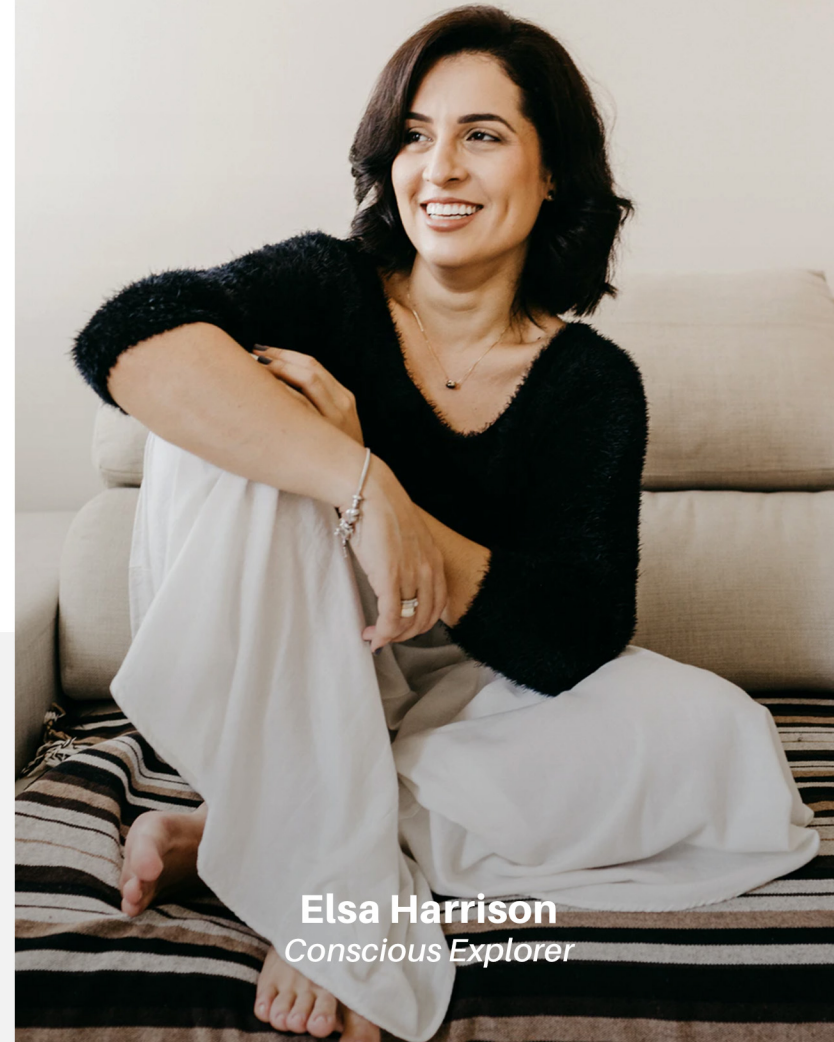
*Lives with her
husband and small
child*



*Follows a rich and
healthy diet*



*Works from home
and office*



Elsa Harrison
Conscious Explorer

Elepsy - Disinfect, Cleanse & Dry Focused Period in Kitchen Journey



User flow



Insights

- Take the food**
 - want fresh want keep the food long time as well
 - easy to take easy to store as well
 - I want to know how much I need to cook, I don't want to waste food
 - I don't want to spend so much time to defrost my food.
- Clean the food**
 - I want to sterilize my food safely and healthily. I don't want to affect the flavor of the food
 - I want to sterilize my food safely and healthily. I don't want to affect the flavor of the food
 - I want to have double security
 - I want clean, want efficient as well
- Cut the food**
 - I want my cutting board to be clean, I don't want germs to enter the crevices
 - I want to save time of cutting
 - I want cut in different volume for different food
 - I want simple cutting board want multi area to cut different food as well
 - I want to have a lot of place to store my food temporarily
- Cook the food**
 - I want to save time or energy on cooking (Since I am always at home, it doesn't matter if the cooking takes a long time, but it would be better to be easy.)
- Eat the food**
 - I want my food to be tasty
 - I want to eat healthily
 - I want to share the food I made with my friends
- Clean the dish**
 - I want my dishes to be clean
 - I don't want to wash the dishes

Opportunities



Covid-19 topic related area

Elepsy - Disinfect, Cleanse & Dry Problem Definition

There's not a good solution to cleanse and disinfect raw food, especially vegetables & fruits.

*People have concerns about the cleanness of the food even after washing it with water. Some even use **soap or dangerous chemicals** to disinfect raw food. Furthermore, while cleansing, a **large amount of water** is used.*

Grocery Shopping

Before the goods reach the consumer, they go through a long distribution channel.



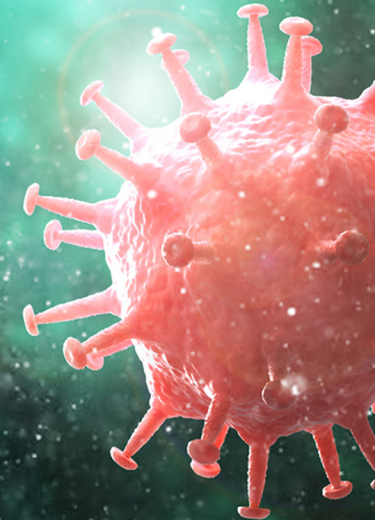
Cleansing

Water is mainly used to cleanse the vegetables and fruits. Some people use vinegar to remove potential bacteria.



Physical Inspection

People tend to touch and examine vegetables' condition.



Virus?

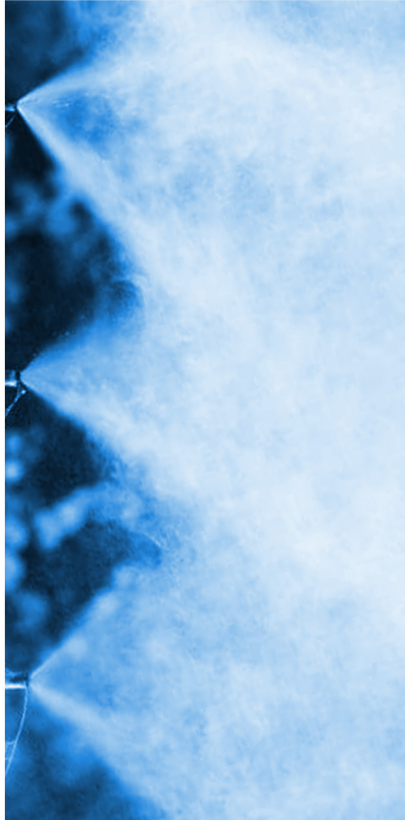
*"Have I cleaned enough?"
"Can I give it to my child now?"
"Is it safe from viruses?"*

Elepsy - Disinfect, Cleanse & Dry
**Research &
Technologies**

There are several technologies involved in the product to achieve safe food cleaning.

**Electrolyzed Water
Mist**

It turns water into powerful sterilizer through electrolyzing with the tri-polar electrode unit. Hypochlorous acid is generated using the minerals from tap water.



Ultrasonic Washing

It removes pesticides and active substances remaining on the surface of fruits and vegetables while also removing the dirt.



Drying

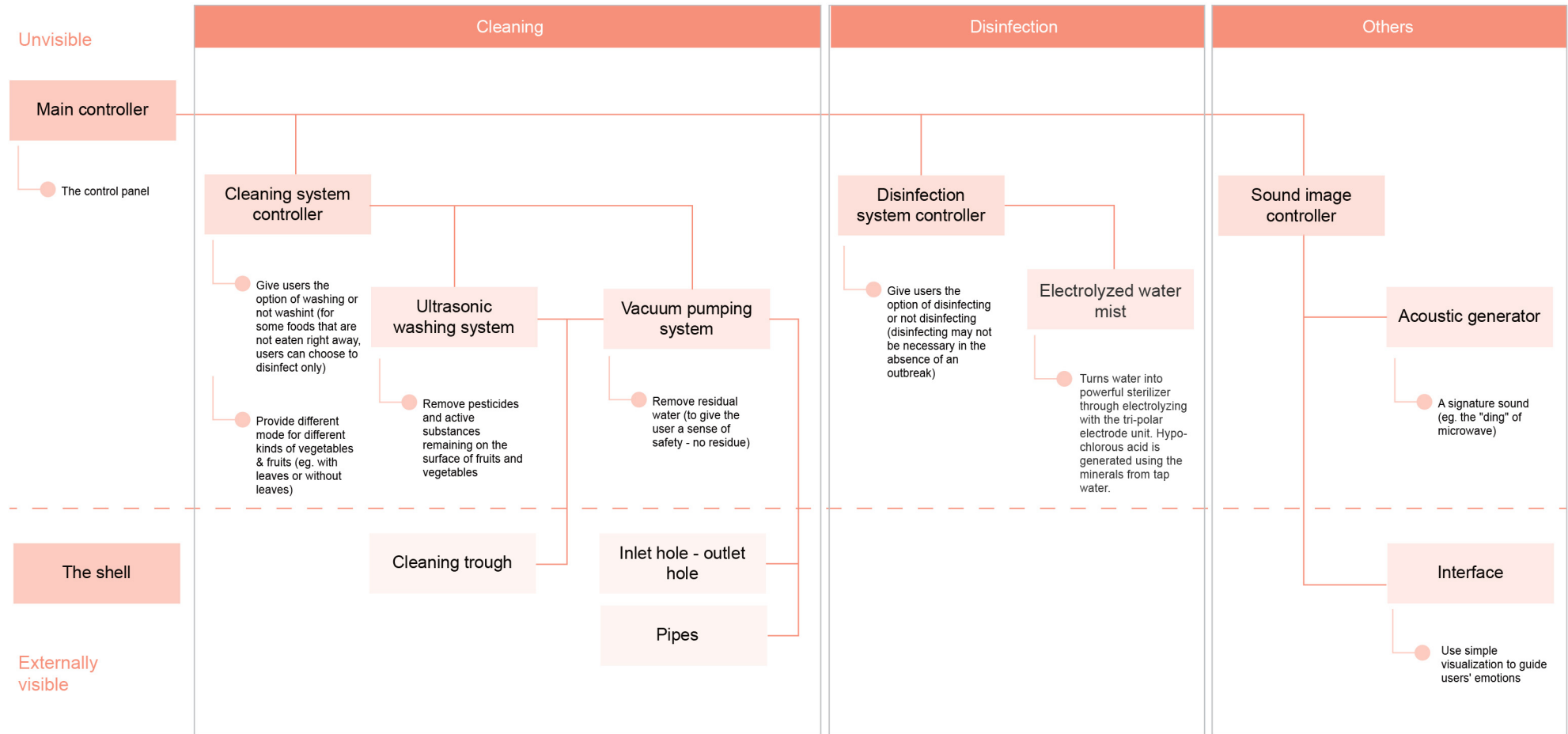
Vacuuming (*sucking in the water*) will be applied to the food to be able to get rid of the excess water after the cleansing process.



Related Products

In this area, there are products using **UV-C disinfection, ozone generation, ultrasonic vibration, micro-electrolytic washing and chlorine.**

Description of Components



Elepsy - Disinfect, Cleanse & Dry



 Electrolux

Elepsy - Disinfect, Cleanse & Dry



ELEPSY aims to solve these problems by giving users the opportunity to disinfect, cleanse & dry the vegetables and fruits in a single product. It is designed as a kitchen-household item where vegetables or fruits can be served thanks to the attachable plate it has.

It stands as a functional-contemporary object in home environment and it is created for users to enjoy but also feel safe while using it in their daily lives.

Easy - Disinfect, Cleanse & Dry



Wash - Disinfect, Cleanse & Dry



Model: H0 EE J
Product Name: Eltopy
Power: 100-240V
Manufacturer: Royal Model-30270
Material: ABS Composite
REGISTERED: SHANGHAI
PATENTED: USA/CHINA

Rubber Feet

It keeps the product stable during use.

Elepsy - Disinfect, Cleanse & Dry



Water Carafe

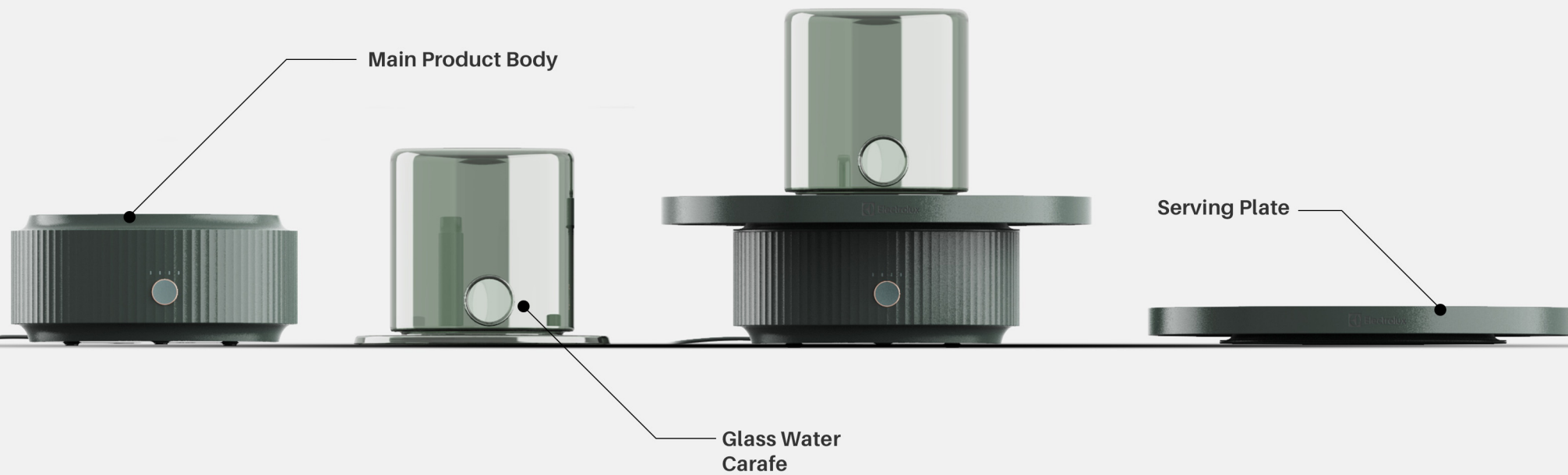
It is used to pour the required amount of water into the product before usage. It is also a decorative element of the design.

Geometric Pattern

A simple geometric pattern used on the side surfaces to add a contemporary look.

Elepsy - Disinfect, Cleanse & Dry







Turn on **Elepsy**
by pressing the knob



Thank you!

Sinan Altun, Yilin Lyu, Yuchen Lan