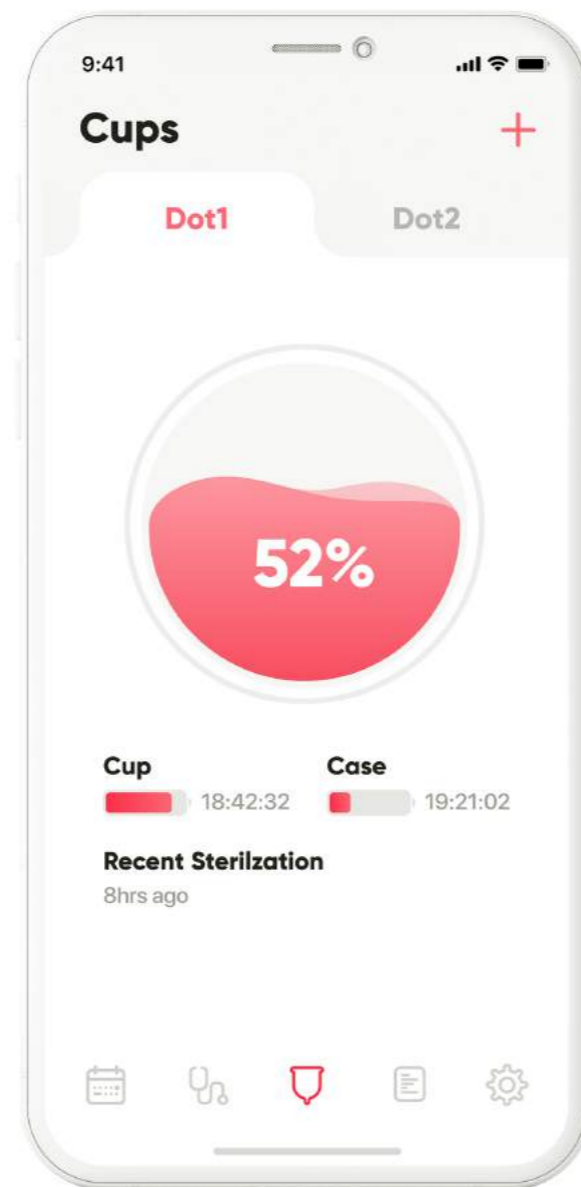
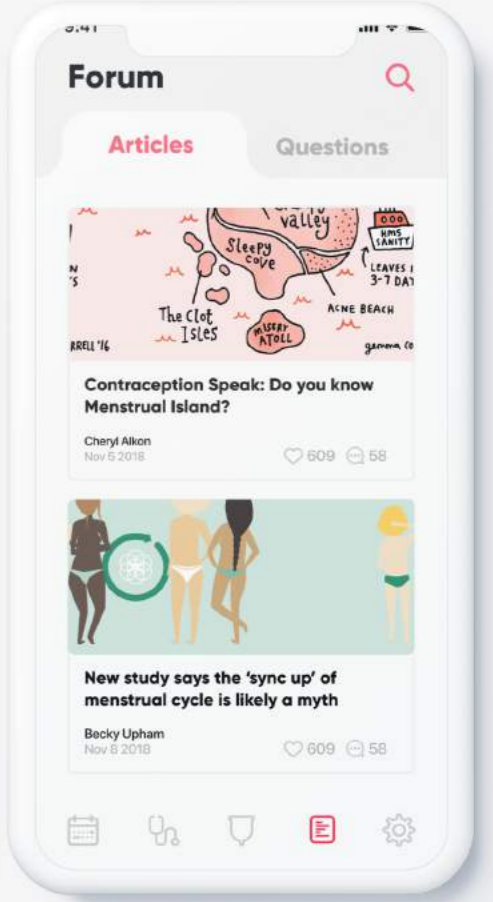
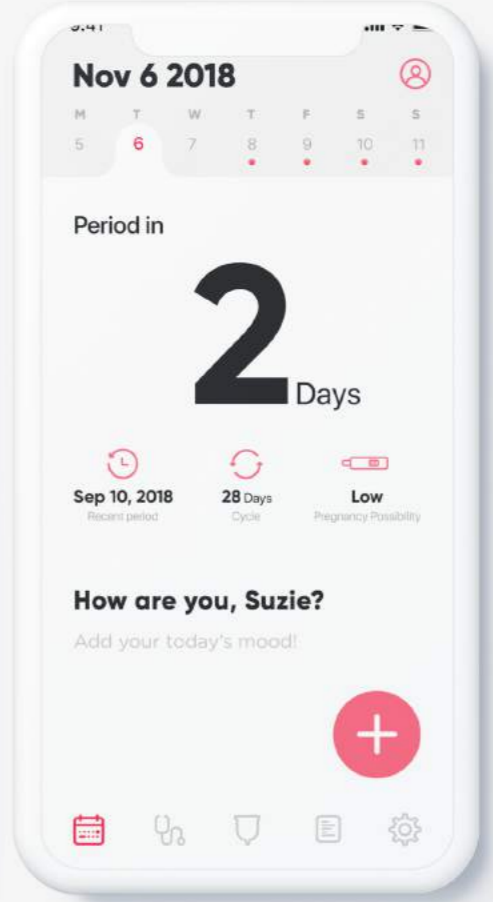
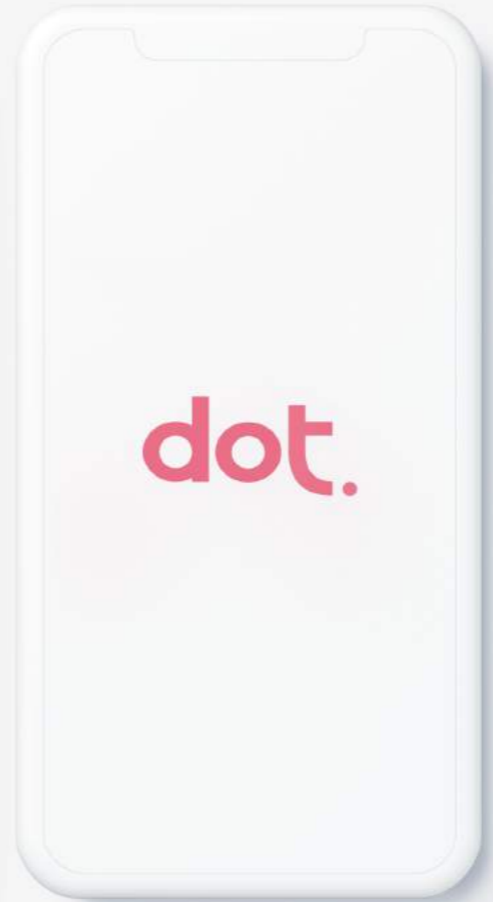
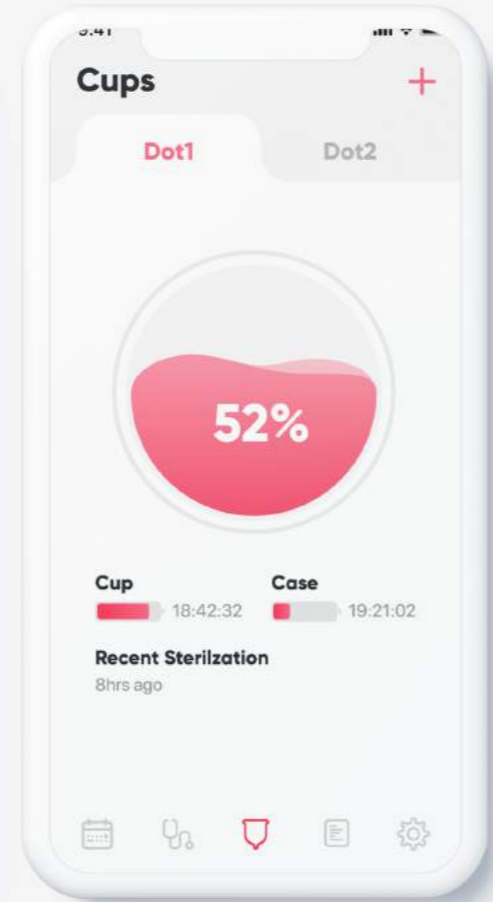
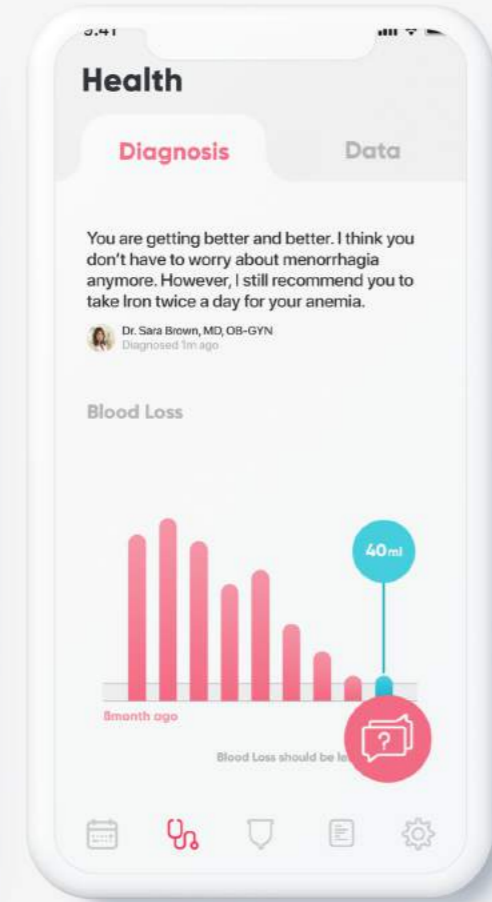
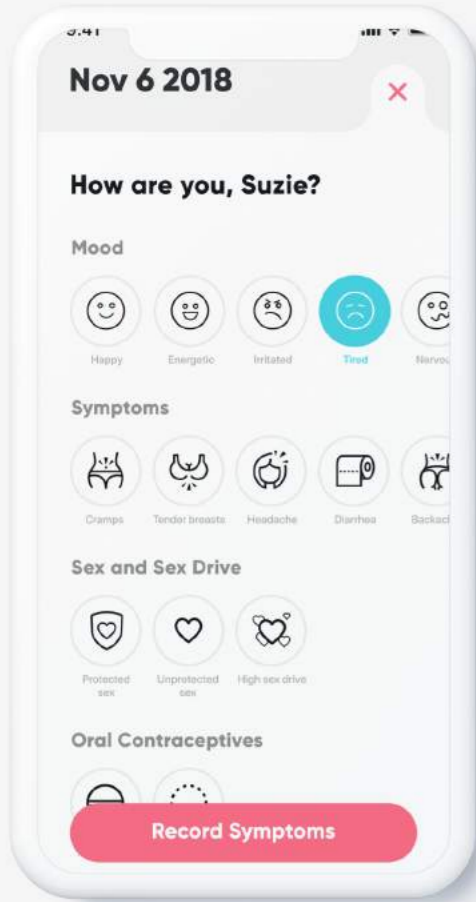


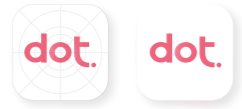
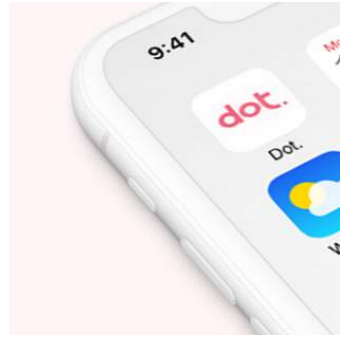
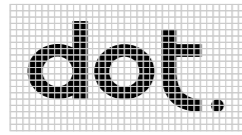
dot.



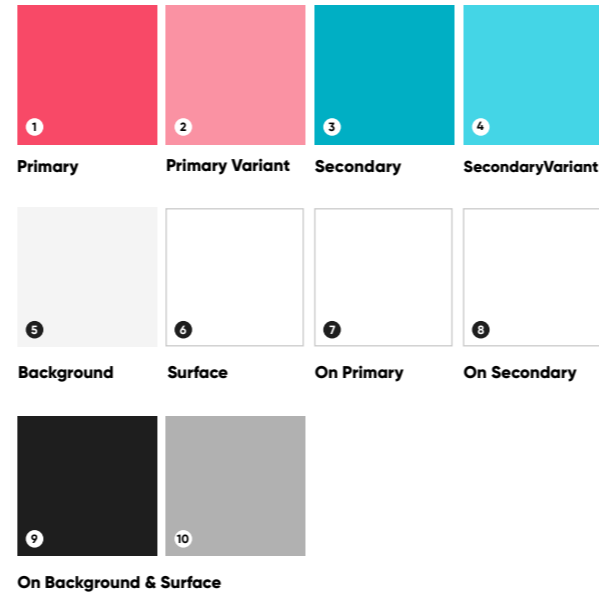
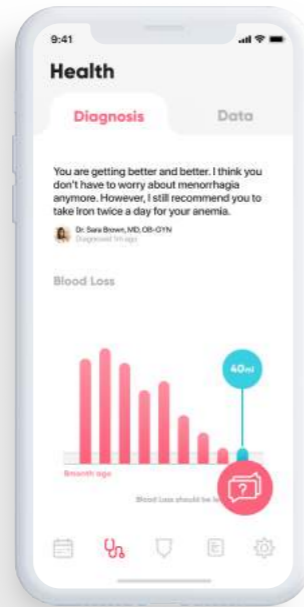


## Logo

dot.



## Color



## Typography

ABCDEFGHIJKLMN  
OPQRSTUVWXYZ  
zbcdefghijklmn  
opqrstuvwxyz  
0123456789

Gilroy - ExtraBold

ABCDEFGHIJKLMN  
OPQRSTUVWXYZ  
zbcdefghijklmn  
opqrstuvwxyz  
0123456789

Gilroy - Bold

ABCDEFGHIJKLMN  
OPQRSTUVWXYZ  
zbcdefghijklmn  
opqrstuvwxyz  
0123456789

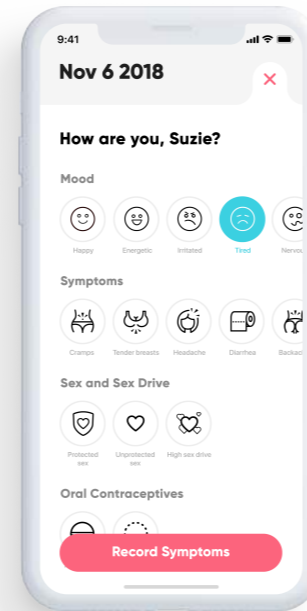
Gilroy - Medium

ABCDEFGHIJKLMN  
OPQRSTUVWXYZ  
zbcdefghijklmn  
opqrstuvwxyz  
0123456789

SF pro display - Medium

Category	Typeface	Weight	Size(Points)	Leading(Points)
H1	Gilroy	Extra-Bold	30	34
H2	Gilroy	Extra-Bold	24	28
H3	Gilroy	Bold	22	26
H4	Gilroy	Bold	18	22
H5	Gilroy	Bold	18	22
H6	Gilroy	Medium	16	19
Body 1	San Francisco	Medium	16	19
Body 2	Gilroy	Medium	16	19
Callout	San Francisco	Medium	16	19
Caption 1	San Francisco	Medium	11	14
Caption 2	San Francisco	Medium	10	13

## Iconography



# Style guide





## Mission Statement

**The product that would check women's health status by analyzing their menstrual blood during period**

## Target Users

Premenopausal women who need eco-friendly and cost-effective menstrual products.

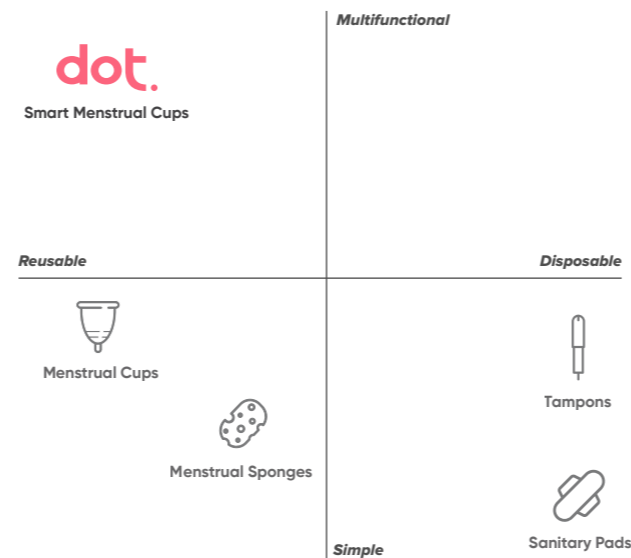
### Early adopters

Women who have irregular cycle and amount of menstrual blood. Women who had an experience with the Menstrual cup. People dissatisfied with the certain aspects of menstrual cup, but overall satisfied

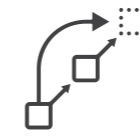
## Positioning Statement

For women especially who has irregular period cycle and amount of blood, Smart menstrual cup is a menstrual cup can check the cycle by measuring the quantity of the blood, and give notification to prevent unexpected cycle and leakage, unlike existing menstrual cup.

### Positioning Matrix:



## Design Criteria



### Proactive

Prevent the blood leakage of unexpected period, and other diseases.



### Connected

Collect your health status in realtime at the connected device.



### Chemical free

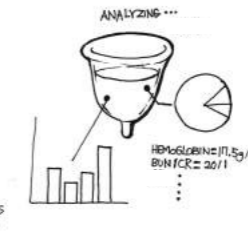
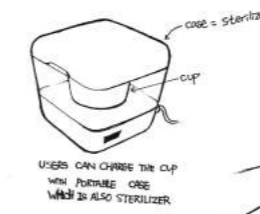
Use the harmless material to your body.



### Eco-friendly

Reuse the cup over 5~8 years.

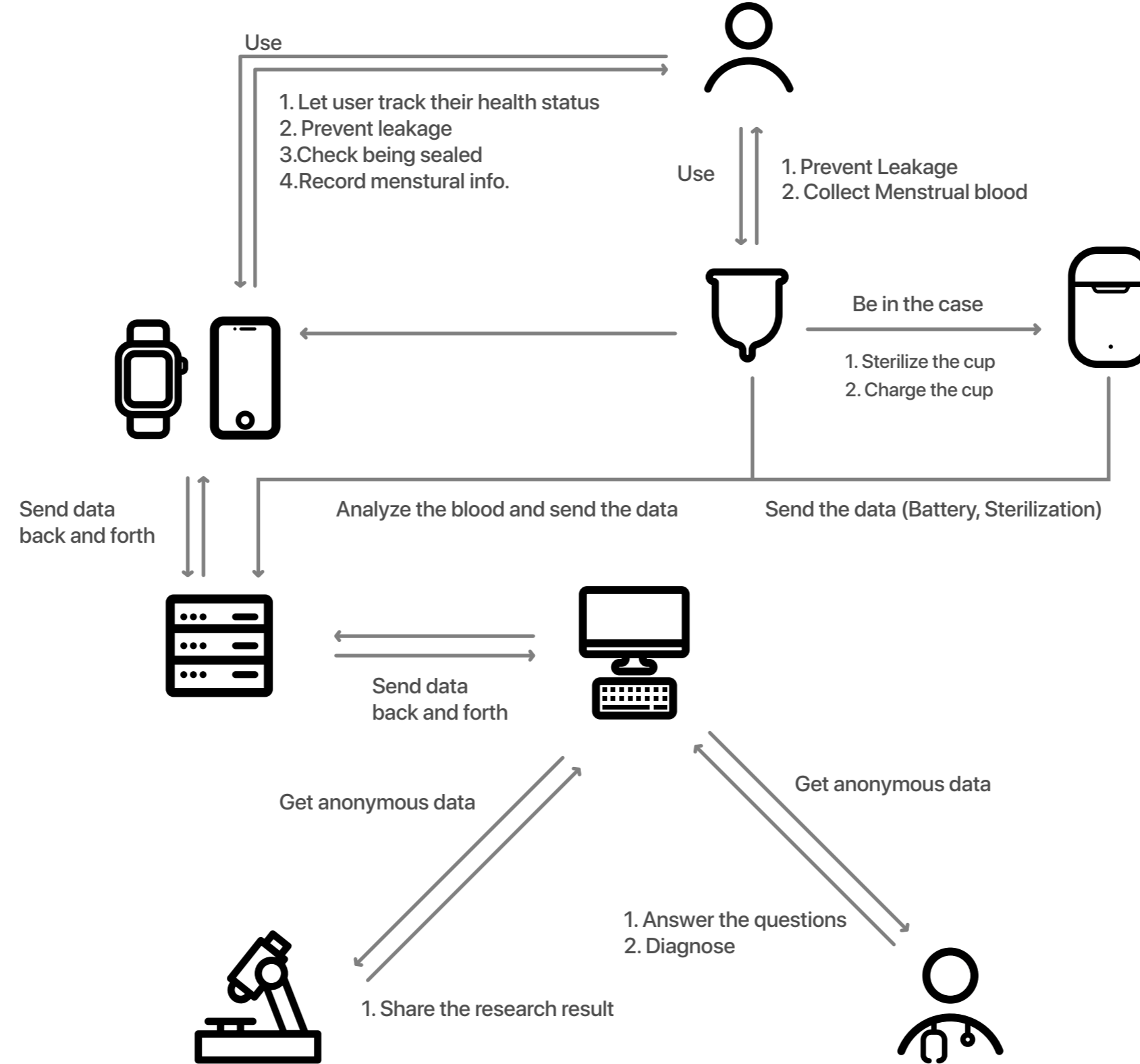
## Touch Point



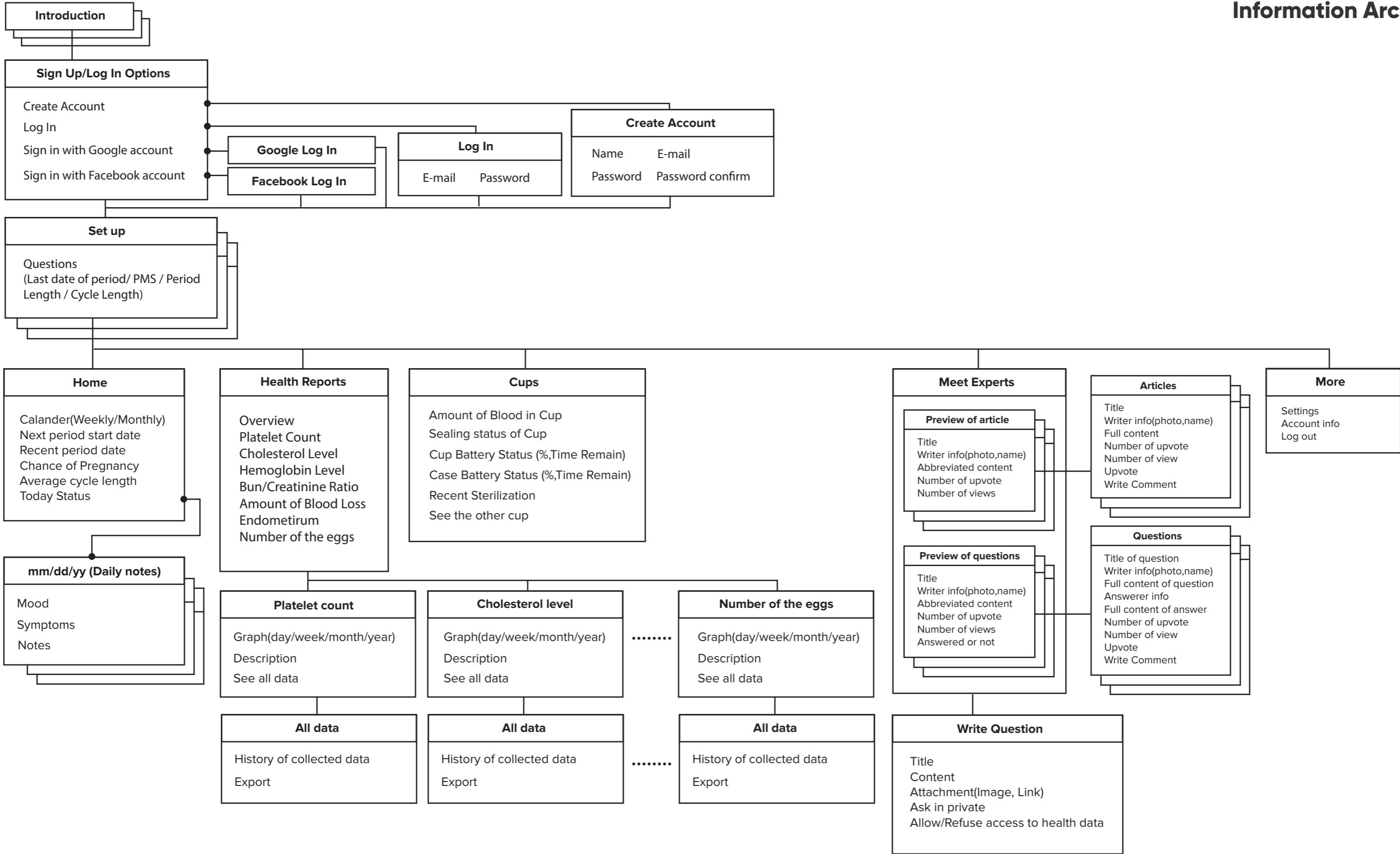
## SWOT

<ul style="list-style-type: none"> <li>- Cost effective in long term.</li> <li>- Have more functions</li> <li>- Can visually check when users have to empty the cup</li> <li>- It is more hygienic than sanitary pad, tampon or any other existing tools</li> </ul>	<ul style="list-style-type: none"> <li>- People are afraid of putting artificial stuffs in their body.</li> <li>- In short term, Sanitary pad and tampon are more affordable.</li> <li>- It is hard to replace in the public space.</li> </ul>
<ul style="list-style-type: none"> <li>- There is no better equipped competitor yet.</li> <li>- There is more needs in women health product</li> </ul>	<ul style="list-style-type: none"> <li>- Lack of environment or facilities to use menstrual cup.</li> <li>- Concept of menstrual cup is not popular.</li> </ul>

# Ecosystem



# Information Architecture



**Introduction**

**Sign Up/Log In Options**

- Create Account
- Log In
- Sign in with Google account
- Sign in with Facebook account

**Google Log In**

**Facebook Log In**

**Log In**

E-mail Password

**Create Account**

Name E-mail  
Password Password confirm

**Set up**

Questions  
(Last date of period/ PMS / Period Length / Cycle Length)

**Home**

Calander(Weekly/Monthly)  
Next period start date  
Recent period date  
Chance of Pregnancy  
Average cycle length  
Today Status

**mm/dd/yy (Daily notes)**

Mood  
Symptoms  
Notes

**Health Reports**

Overview  
Platelet Count  
Cholesterol Level  
Hemoglobin Level  
Bun/Creatinine Ratio  
Amount of Blood Loss  
Endometrium  
Number of the eggs

**Platelet count**

Graph(day/week/month/year)  
Description  
See all data

**All data**

History of collected data  
Export

**Cups**

Amount of Blood in Cup  
Sealing status of Cup  
Cup Battery Status (%Time Remain)  
Case Battery Status (%Time Remain)  
Recent Sterilization  
See the other cup

**Cholesterol level**

Graph(day/week/month/year)  
Description  
See all data

**All data**

History of collected data  
Export

**Number of the eggs**

Graph(day/week/month/year)  
Description  
See all data

**All data**

History of collected data  
Export

**Meet Experts**

**Preview of article**

Title  
Writer info(photo,name)  
Abbreviated content  
Number of upvote  
Number of views

**Preview of questions**

Title  
Writer info(photo,name)  
Abbreviated content  
Number of upvote  
Number of views  
Answered or not

**Articles**

Title  
Writer info(photo,name)  
Full content  
Number of upvote  
Number of view  
Upvote  
Write Comment

**Questions**

Title of question  
Writer info(photo,name)  
Full content of question  
Answerer info  
Full content of answer  
Number of upvote  
Number of view  
Upvote  
Write Comment

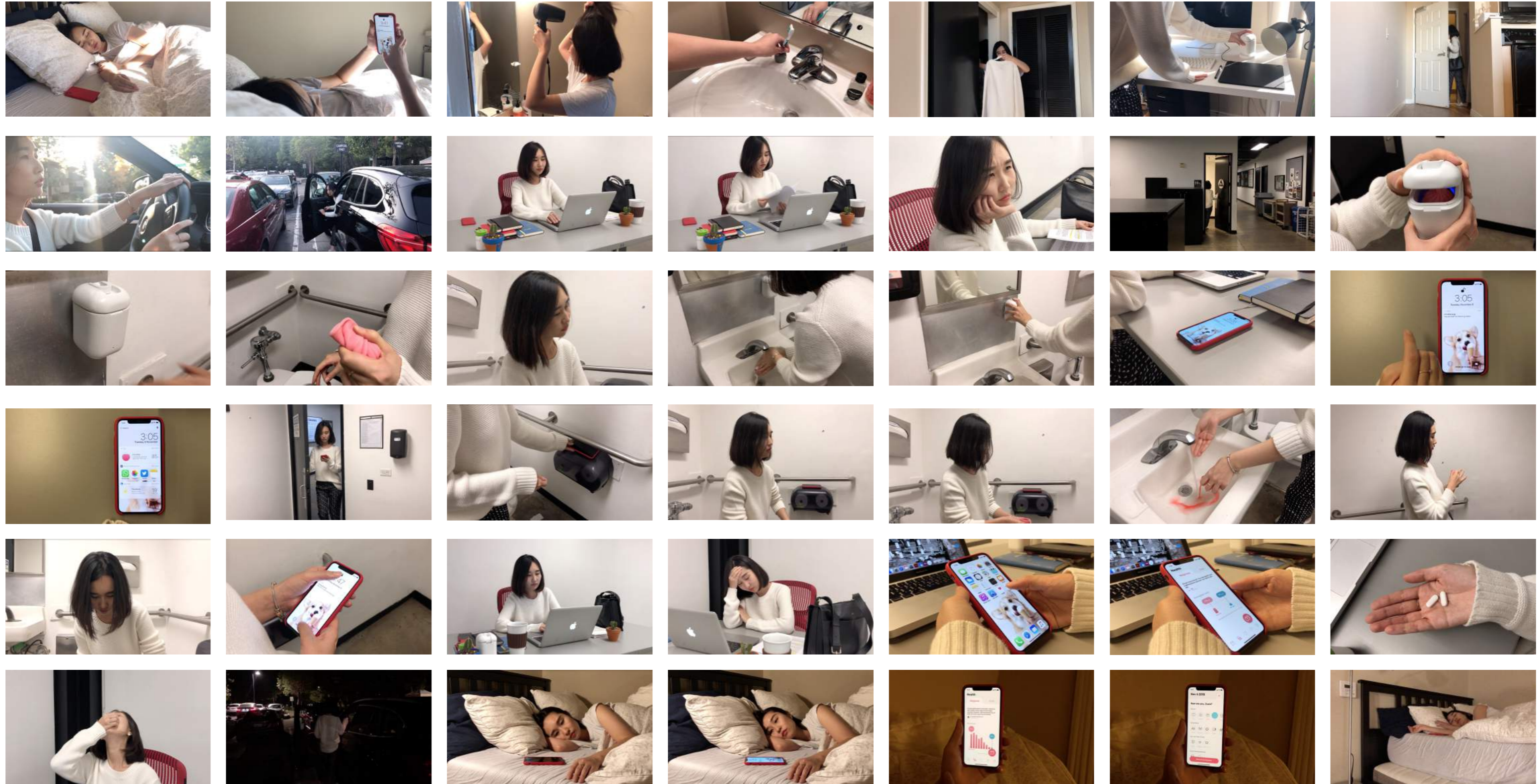
**Write Question**

Title  
Content  
Attachment(Image, Link)  
Ask in private  
Allow/Refuse access to health data




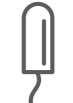
**More**

Settings  
Account info  
Log out

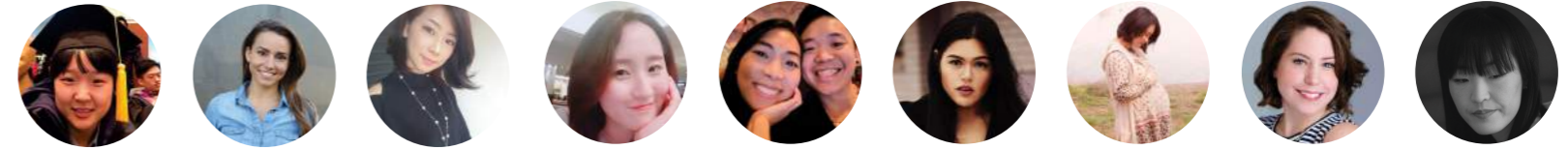
# User Scenario



## Competitive Landscape

	Advantage	Disadvantage
 <p>Sanitary pads</p>	<ul style="list-style-type: none"> <li>- Cost effective in short term</li> <li>- Easy to use, Easy to throw away</li> </ul>	<ul style="list-style-type: none"> <li>- Bad ventilation / texture issue</li> <li>- Prone to bacterial growth and other infections</li> <li>- No transparency about chemicals.</li> <li>- Activities are limited</li> </ul>
 <p>Menstrual cups</p>	<ul style="list-style-type: none"> <li>- It decreases menstrual pain</li> <li>- More eco-friendly</li> <li>- Cost efficient in long term</li> <li>- Liquid Silicon (no infection and bacterial growth)</li> <li>- Can check the menstrual blood</li> <li>- No limitation of activities</li> </ul>	<ul style="list-style-type: none"> <li>- Hard to use for beginner</li> <li>- Some people are afraid of put artificial things in their body.</li> <li>- Hard to install and remove</li> <li>- Hard to know which model is appropriate before using it.</li> <li>- Hard to replace in public place</li> </ul>
 <p>Menstrual sponges</p>	<ul style="list-style-type: none"> <li>- Good to contain heavy flow</li> <li>- Can use 6~12 month</li> </ul>	<ul style="list-style-type: none"> <li>- Easily be messy when replace it</li> <li>- Some people are afraid of put artificial things in their body.</li> <li>- Hard to replace in public place</li> </ul>
 <p>Tampons</p>	<ul style="list-style-type: none"> <li>- Cost effective in short term</li> <li>- Easy to use, Easy to throw away</li> <li>- No limitation of activities</li> </ul>	<ul style="list-style-type: none"> <li>- Toxic shock syndromee</li> <li>- Some people are afraid of put artificial things in their body.</li> <li>- Usually have to use with pads to prevent leakage</li> </ul>

## Summary of interviews



### What goals would they want to achieve with your system?

1. Do not worry about leakage.
2. They want to predict the start date of menstruation to prepare Menstruation cup.
3. They want to figure out menstruation cycle and record it.
4. They want to check their health status

### What is their current scenario in achieving those goals now?

1. They layer a few clothes, and prepare Sanitary pad when they think period is going to start.
2. Someone who do not have regular period just follow their gut to predict the period.
3. Some of them manually record their cycle, and the amount of their blood.

### What are the pain points?

1. Fear of leakage
2. Anxiety from unpredictable start of period
3. Forget to record their cycle, and the amount of their blood
4. Hard to meet the specialist of period.

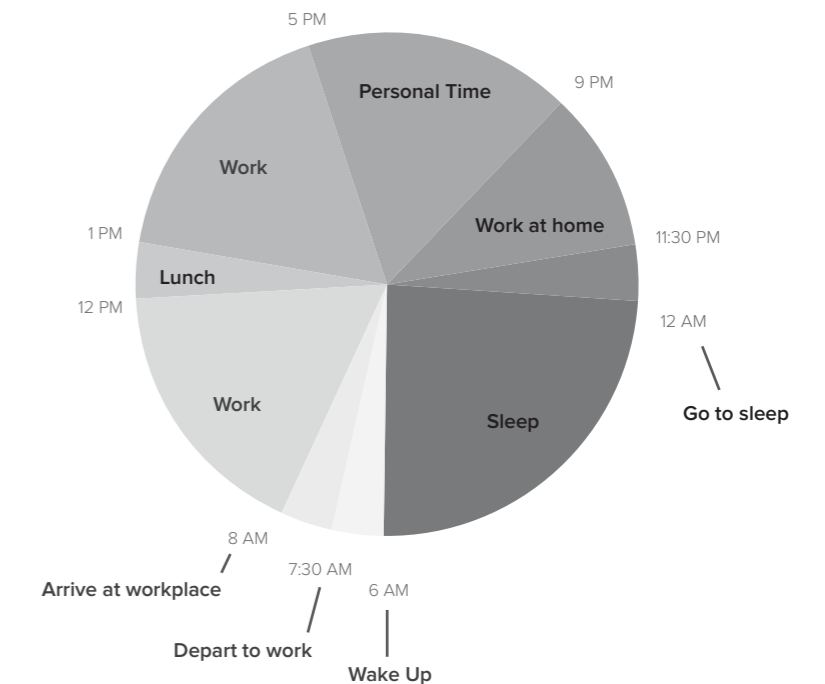
### What are Unique?

1. Woman who have irregular period predict their period through their instinct
2. They have different types of cramps.
3. How they start to use Menstruation cup was different.

### What are Consistent?

1. Fear of leakage.
2. Do not know the reason of cramps.
3. They tried to meet specialist because of cramps or another reasons.
4. During menstruation, the amount of activity decreases.
5. Fear of put machine in their body.
6. They struggle or are struggling inserting and removing Menstruation cup.

### What is a typical day for users?



# Research





# Behavior & Posture Study

Location: Toilet(Private and Public)



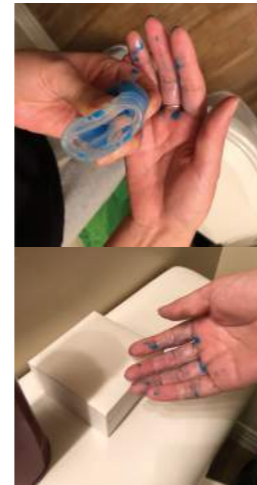
Women need things to carry when they go to toilet to insert or empty the cup (phone, water bottle, case, wet tissue etc.)



Both hands are used one is for holding a cup and the other is for supporting insert.

- She can not touch phone right after installation.
- Give feedback without any haptic interaction.

Individuals have different ways to insert.



While they empty the cup, both hands easily get messy.

Hard to touch other things



They have to touch blood while they empty the cup



Wash their body or hands after they installed.

- In public toilet, They carry wet tissues to clean their body
- Have to give feedback before this point.



They use microwave to sterilize the cup after menstruation.

- Users might not want to touch the blood directly
- They might not want to touch the phone while they empty the cup.
- They might want to find a way to sterilize more often and convenient



Women usually wash their cup and hands with the water bottle or wet tissue

- Even the water bottle and wet tissue getting messy
- Do not want to touch the phone with dirty hands



It is hard to wash their cup in public toilet; however, they usually wash it in the sink

# Low-fi Wireframes

The image displays a comprehensive set of low-fidelity wireframes for a mobile application, organized into several sections:

- Top Left:** A series of six small wireframe cards, each with a question and a 'YES/NO' response area. Questions include: 'Do you know about how long your cycle is?', 'Do you know about how long your period is?', 'Do you know about how long your bleed is?', 'Do you know about how long your spotting is?', 'Do you know about how long your cramps are?', and 'Do you know about how long your mood is?'. Each card has a progress indicator of five dots.
- Top Middle:** A series of six more wireframe cards with questions like 'Do you know about how long your cycle is?', 'Do you know about how long your period is?', 'Do you know about how long your bleed is?', 'Do you know about how long your spotting is?', 'Do you know about how long your cramps are?', and 'Do you know about how long your mood is?'. These cards include more detailed UI elements like buttons and text boxes.
- Top Right:** A 'Structure map' showing a hierarchical flow of the application's screens, including sections for 'Home', 'Reports', 'Experts', and 'Sign in/Set up'.
- Middle Left:** A large, detailed wireframe for the 'MAIN PAGE HOME' screen, showing a complex layout with multiple sections, buttons, and text areas.
- Middle Right:** A wireframe for the 'REPORT' screen, featuring a list of reports and a 'COP' (Cycle of Period) section with a calendar-like view.
- Bottom Left:** A wireframe for the 'SIGN IN/SET UP' screen, showing a form with fields for 'ID', 'Password', and 'Cycle length', along with a 'Sign in' button.
- Bottom Right:** A wireframe for the 'SIGN IN/SET UP' screen, showing a form with fields for 'Email', 'Password', and 'Cycle length', along with a 'Sign in' button.

Two black rectangular redaction marks are present at the bottom left of the page.

# Product Ideation & Environment study

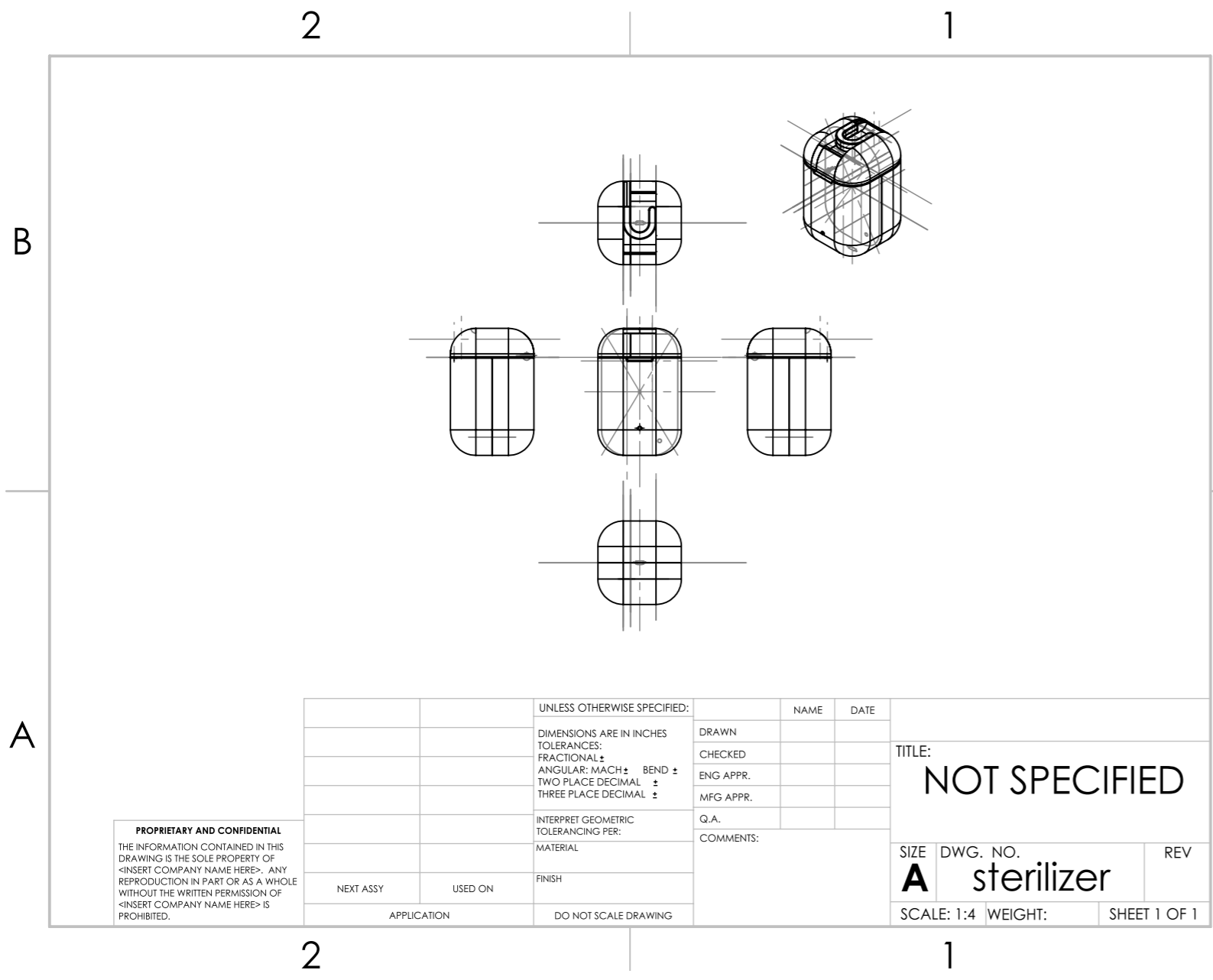
cup case ideation 9/11/2018 - 0

Annotations and notes:

- plastic wall
- Metal wall
- different shape of hooks
- all metal material
- hooked to touch the hooks while sitting on toilet
- Maybe kind of ring to hang on the hooks?
- Then Not thick case
- Not possible in locks... hooks?
- Bathroom locks
- Some have space between lock & door
- Most of locks are metal material
- Little bit for lock easy to access
- All locks are metal

Annotations and notes:

- metal
- Hooks might work here
- dispensers are mainly metal material
- plastic
- BATH ROOM dispensers
- easy to touch and access with one hand
- materials are mainly metal
- Magnet?? Attach it easily
- KEY: METAL
- :SPACE



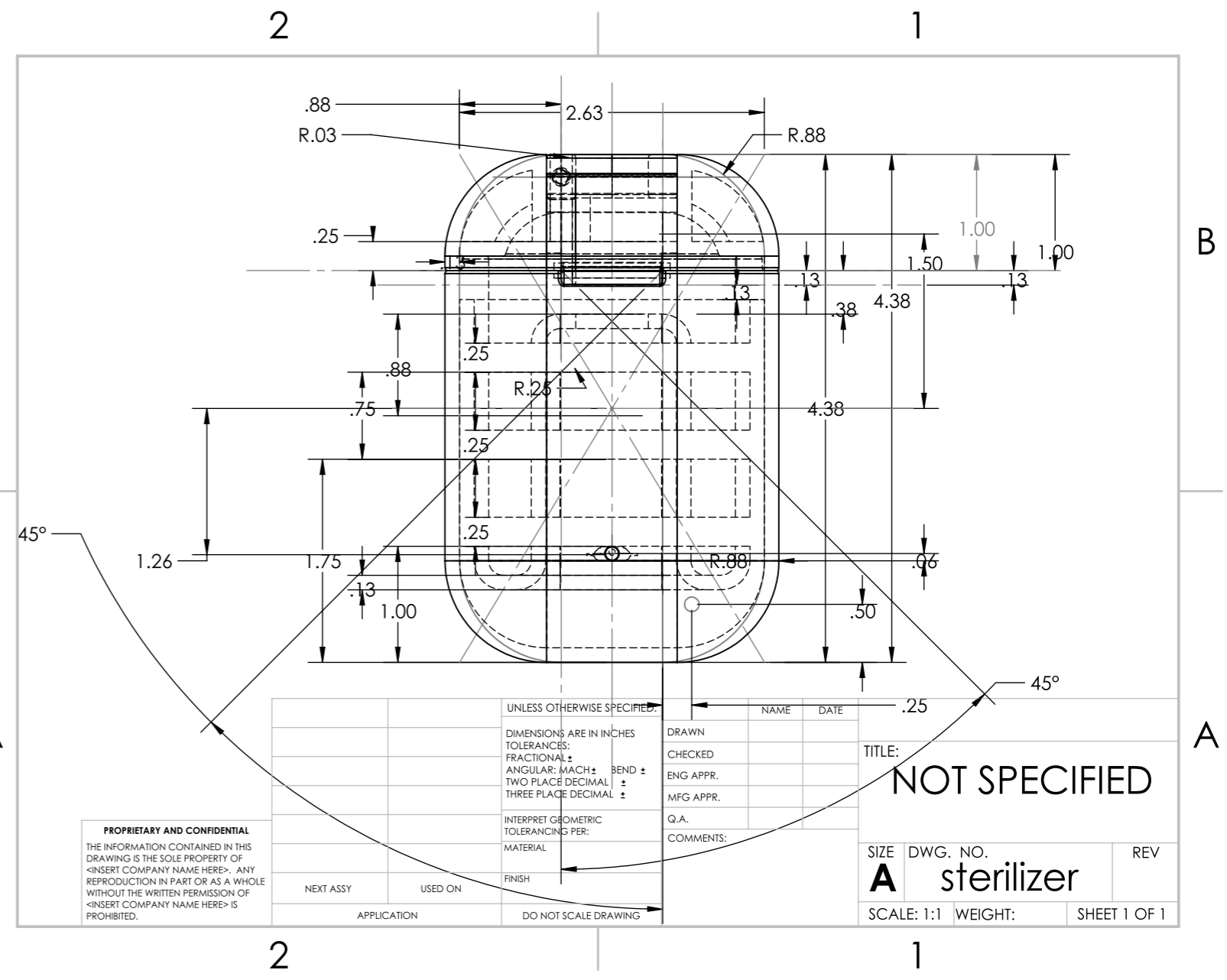
**PROPRIETARY AND CONFIDENTIAL**  
 THE INFORMATION CONTAINED IN THIS DRAWING IS THE SOLE PROPERTY OF <INSERT COMPANY NAME HERE>. ANY REPRODUCTION IN PART OR AS A WHOLE WITHOUT THE WRITTEN PERMISSION OF <INSERT COMPANY NAME HERE> IS PROHIBITED.

UNLESS OTHERWISE SPECIFIED:		NAME	DATE
DIMENSIONS ARE IN INCHES		DRAWN	
TOLERANCES:		CHECKED	
FRACTIONAL: $\pm$		ENG APPR.	
ANGULAR: MACH $\pm$ BEND $\pm$		MFG APPR.	
TWO PLACE DECIMAL $\pm$		Q.A.	
THREE PLACE DECIMAL $\pm$		COMMENTS:	
INTERPRET GEOMETRIC TOLERANCING PER:	MATERIAL		
FINISH			
NEXT ASSY	USED ON		
APPLICATION			
DO NOT SCALE DRAWING			

TITLE:  
**NOT SPECIFIED**

SIZE DWG. NO. REV  
**A** sterilizer

SCALE: 1:4 WEIGHT: SHEET 1 OF 1



**PROPRIETARY AND CONFIDENTIAL**  
 THE INFORMATION CONTAINED IN THIS DRAWING IS THE SOLE PROPERTY OF <INSERT COMPANY NAME HERE>. ANY REPRODUCTION IN PART OR AS A WHOLE WITHOUT THE WRITTEN PERMISSION OF <INSERT COMPANY NAME HERE> IS PROHIBITED.

UNLESS OTHERWISE SPECIFIED:		NAME	DATE
DIMENSIONS ARE IN INCHES		DRAWN	
TOLERANCES:		CHECKED	
FRACTIONAL: $\pm$		ENG APPR.	
ANGULAR: MACH $\pm$ BEND $\pm$		MFG APPR.	
TWO PLACE DECIMAL $\pm$		Q.A.	
THREE PLACE DECIMAL $\pm$		COMMENTS:	
INTERPRET GEOMETRIC TOLERANCING PER:	MATERIAL		
FINISH			
NEXT ASSY	USED ON		
APPLICATION			
DO NOT SCALE DRAWING			

TITLE:  
**NOT SPECIFIED**

SIZE DWG. NO. REV  
**A** sterilizer

SCALE: 1:1 WEIGHT: SHEET 1 OF 1

