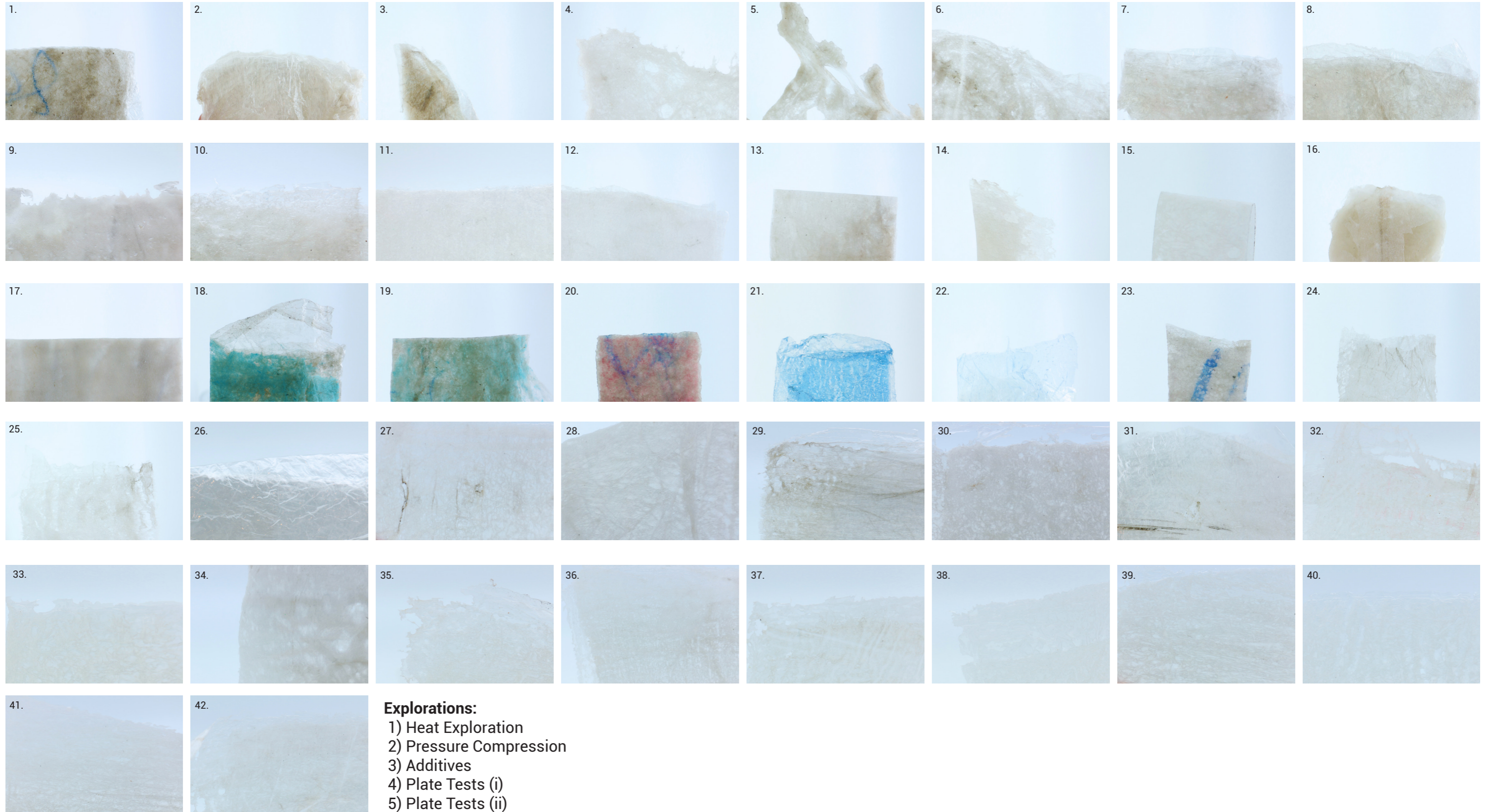
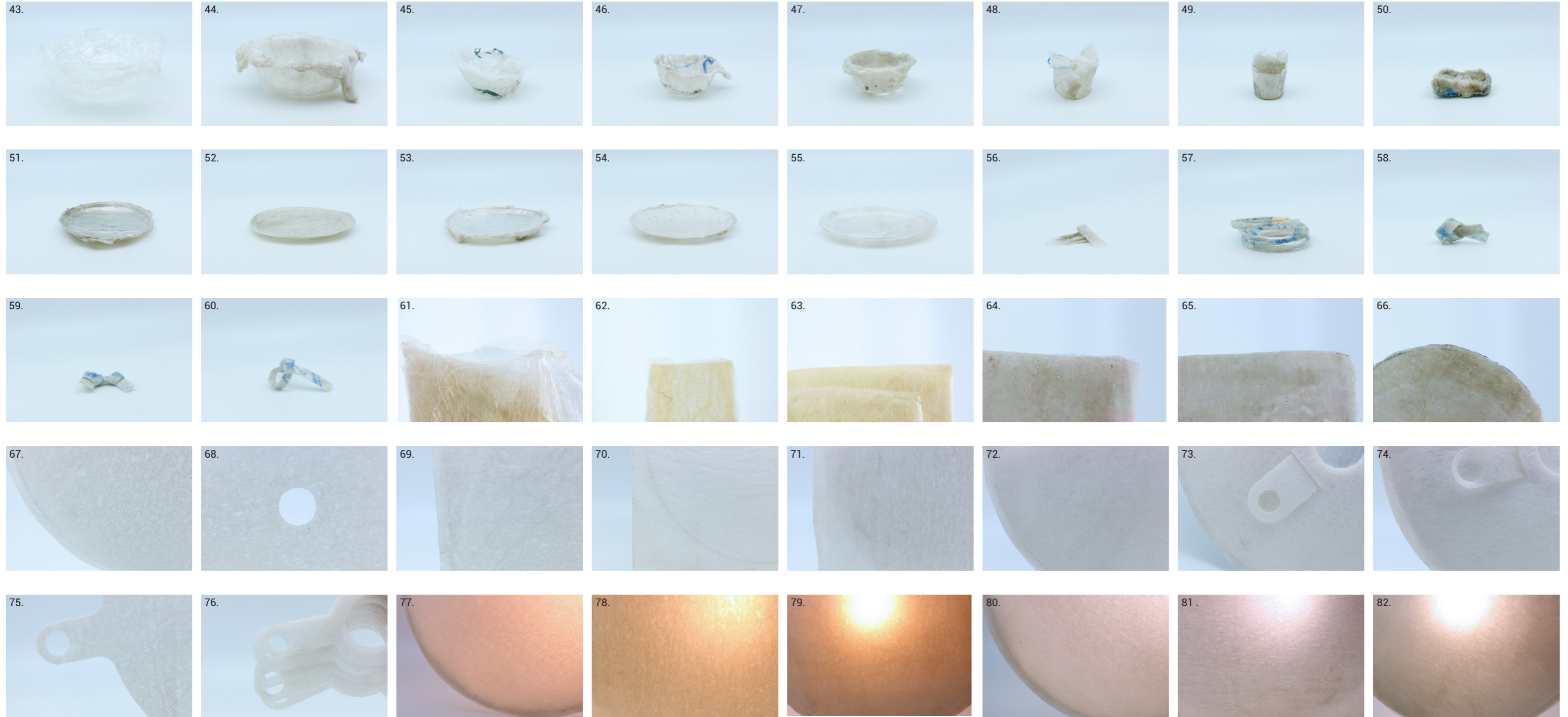


Exploration Matrix (Phase 1)



Exploration Matrix (Phase 2)



Explorations:

- 1) Vessel (bowl/cup)
- 2) Vessel (plate)
- 3) Strip Exploration
- 4) Edge Seal Exploration
- 5) Final Form (i)
- 6) Final Form (ii)
- 7) Bulb Temperature Test

Exploration Summary

Exploration Matrix (Phase 1)

1) Heat Exploration

1. Ironed, max heat with compression
2. Hot air gun without compression
3. Iron, thin layer, with compression
4. Hot air gun, melted over mold
5. Oven, uncompressed, 10 min, 180°C

2) Pressure Compression

6. Iron, paper backing, 4 layers
7. Iron, paper backing, 8 layers
8. Iron, paper backing, 10 layers
9. Iron, paper backing, 24 layers
10. Iron, baking paper, 4 layers
11. Iron, baking paper, 8 layers
12. Iron, baking paper, 16 layers
13. Iron, baking paper, 20 layers
14. Iron, baking paper, 24 layers

3) Additives

15. Iron, white paper, water rubbed off, 48 layers
16. Iron, white paper, water rubber off, 24 layers (small batch)
17. Iron, blue paper, water rubber off, 8 layers
18. Iron, blue paper, water rubber off, 12 layers
19. Iron, red paper, water rubber off, 12 layers
20. Iron, baking paper, soaked in blue nylon dye, 4 layer
21. Soaked in blue nylon dye, 1 layer
22. Iron, blue marker within layers, 10 layers
23. Iron, baking paper, 4 layers
24. Iron, baking paper, 8 layers

4) Plate Tests (i)

25. Sandwich metal, 180°C, 5min, 12 layers
26. Metal mould, baking paper, 5min, 10 layers
27. Wooden mould, baking paper, 8 min, 180°C
28. Wooden mould, baking paper, 10 min, 180°C
29. Wooden mould, baking paper, 10 min, 190°C
30. Wooden mould, baking paper, 12 min, 200°C
31. Wooden mold, aluminium foil, 5 min, 190°C
32. Metal plate, aluminium foil, mattes surface, 8 min, 180°C
33. Metal plate, aluminium foil, shiny surface, 8 min, 180°C

5) Plate tests (ii)

34. Metal plate, baking paper, 5 min, 180°C, 10 layers
35. Metal plate, baking paper, 5min, 190°C, 14 layers
36. Metal plate, baking paper, 10 min, 180°C, 14 layers
37. Metal plate, baking paper, 12 min, 180°C, 14 layers
38. Metal plate, baking paper, 4 min, 180°C, 8 layers
39. Metal plate, baking paper, 8 min, 180°C, 10 layers
40. Metal plate, baking paper, 8 min, 180°C, 12 layers
41. Metal plate, baking paper, 8 min, 180°C, 14 layers
42. Metal plate, baking paper, 8 min, 180°C, 18 layers

Exploration Matrix (Phase 2)

1) Vessel (bowl/cup)

43. 2 part metal mould, G-clamp, 180°C, 2 min
44. 2 part metal mould, G-clamp, 180°C, 5 min, naked
45. 2 part metal mould, G-clamp, 180°C, 5 min
46. 2 part metal mould, G-clamp, 2nd time heated, G-clamp, 180°C, 5 min
47. 2 part metal mould, G-clamp, direct compress, 180°C, 5 min
48. Flat piece, rolled up and ironed at seam
49. Rolled up, ironed at seam, heat welded at edges

2) Vessel (plate)

50. Oven baked, hand molded
51. Ironed over mold, baking paper, direct compress
52. 2 part metal mould, G-clamp, 170°C, 5 min, direct compress, repeat 3 times
53. 2 part metal mould, G-clamp, 180°C, 5 min, trim edges when molten, 14 layers
54. 2 part metal mould, G-clamp, 180°C, 5 min, trim edges when molten, 12 layers
55. 2 part metal mould, G-clamp, 180°C, 5 min, trim edges when molten, 10 layers

3) Strip Exploration

56. Cut into small strips, arranged
57. Thin strips, wrapped into a striped bangle
58. Wider strip folded into knot
59. Wider strip folded into 2 knots
60. Thin strip folded and ironed

4) Edge Seal Exploration

61. Heat resistant shrink wrap, ironed and compressed, 8 layers
62. Heat resistant shrink wrap, ironed and compressed, 10 layers
63. Heat resistant shrink wrap ironed at edges
64. 2 layers edge seal, rectangle
65. 2 layers edge seal, rounded rectangle
66. 2 layers edge seal, circle

5) Final form (i)

67. Large circle, edge seal
68. Large circle, donut, laser cut
69. Large rectangle, edge seal, inflated, hot air gun
70. Edge seal large rectangle, leaving a circular pocket of air
71. Edge seal large rectangle, circular pocket of air, inflated

6) Final form (ii)

72. Large circle, edge seal, inflated
73. Bulb attachment thicker width
74. Bulb attachment thinner width
75. Circular base with bulb attachment, laser cut
76. Bulb attachment, various dimensions

7) Bulb Temperature Test

77. Circular lamp, 650 lumens, warm white
78. Surface close up, inflated 650 lumens, warm white
79. Bulb in centre, 650 lumens, warm white
80. Circular lamp, 650 lumens, cool white
81. Surface close up, inflated 650 lumens, cool white
82. Bulb in centre, 650 lumens, cool white