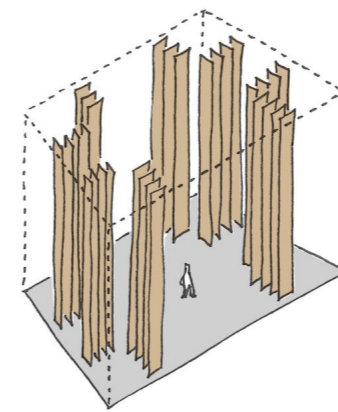




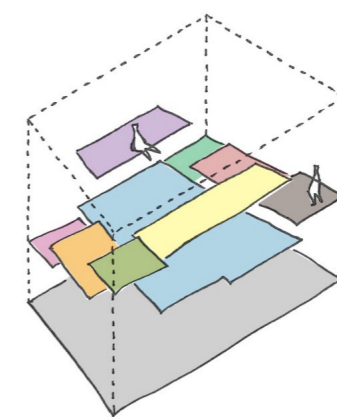
柱の杜

Pillar Grove



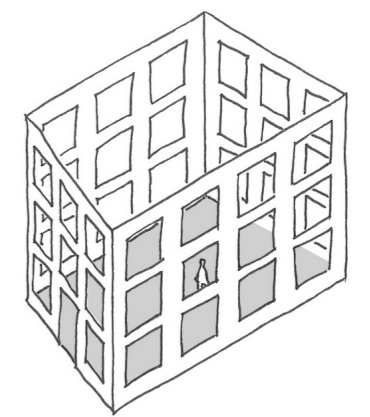
pillar

Concerning the placement of pillars, 30 pillars were placed in a hash-tag layout allowing the creation of a structure that has no load bearing walls inside.



slab

Free-arrangement of the slabs produced differences in height allowing the staff to choose their own custom spaces in the office.



facade

Surrounding with façade lay-outed same rhythm openings.

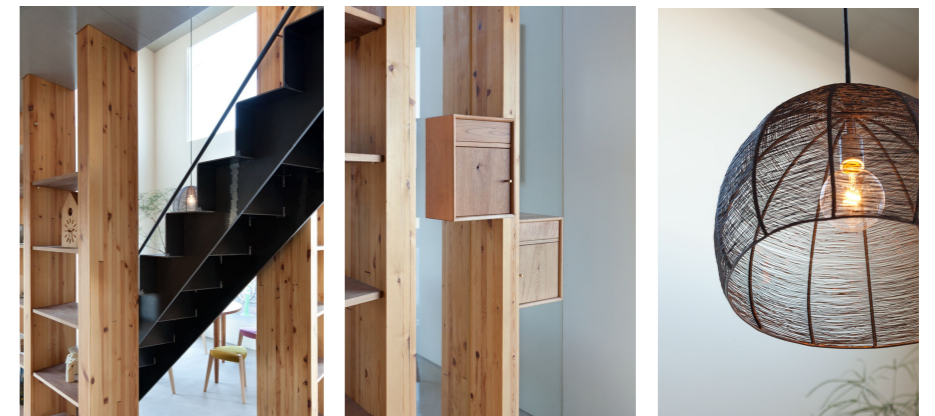
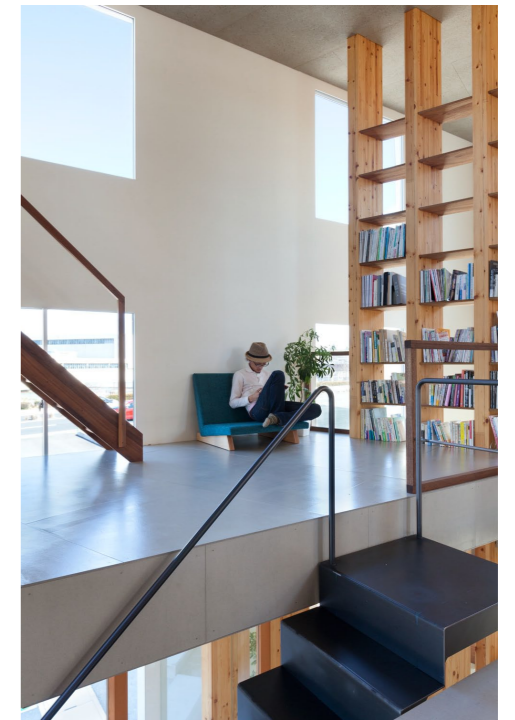
A space with own custom spaces 1



Combined different level of slabs with inserted 30 pillars and façade which have windows lay-outed same rhythm.

This operation makes different character of spaces and it allows staffs to choose their own custom spaces in the office.

A space with own custom spaces 2



City light



A large development project being undertaken in the surrounding area, will transform the site in years to come.

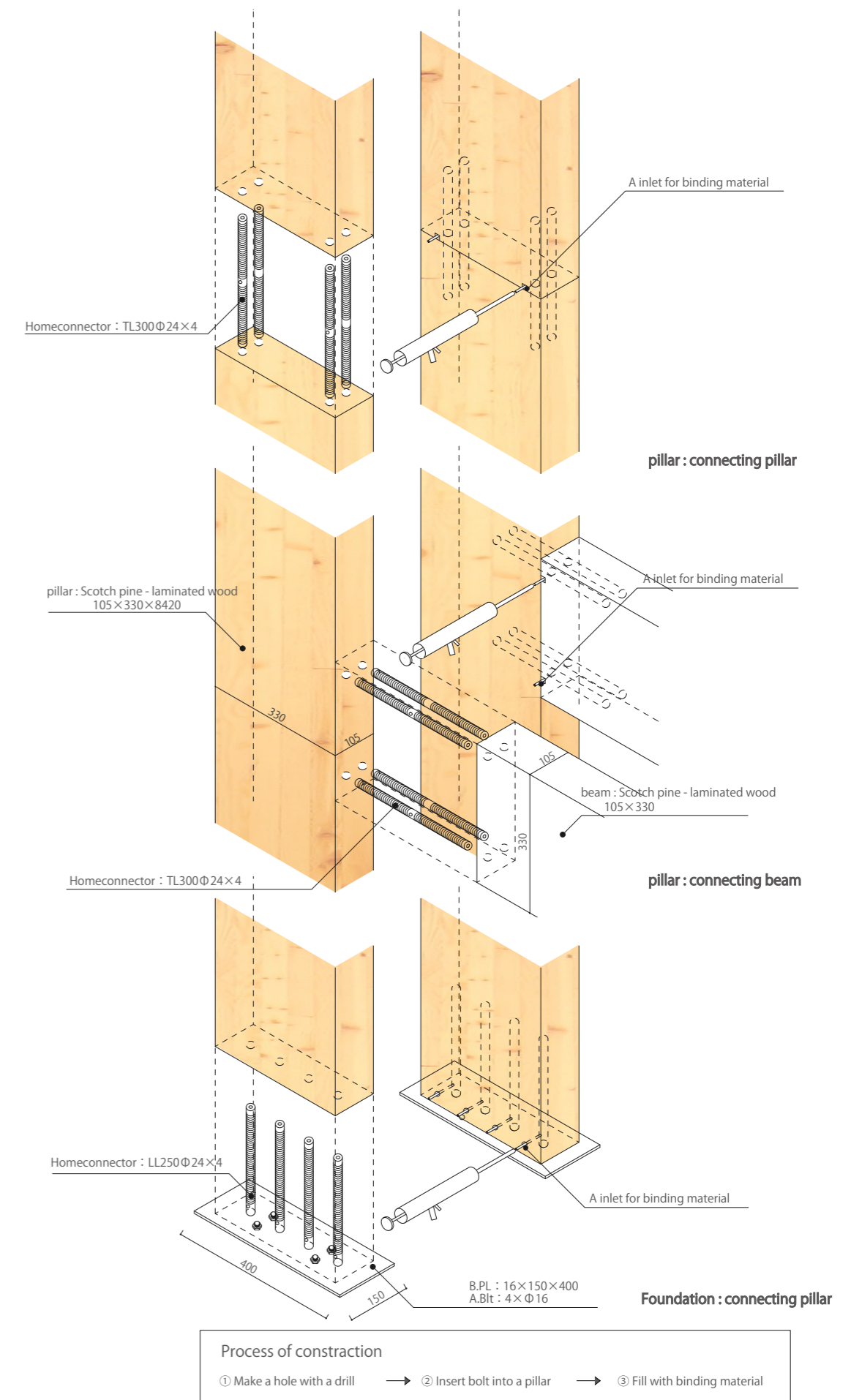
We believed that this town need some iconic building as a landmark. And we studied a building pillars comes up with orange light at night.

People passing the building are interested in orange light come out from large windows, and ask to our staff 'What kind of store is it?' 'It must be a book store isn't it?'

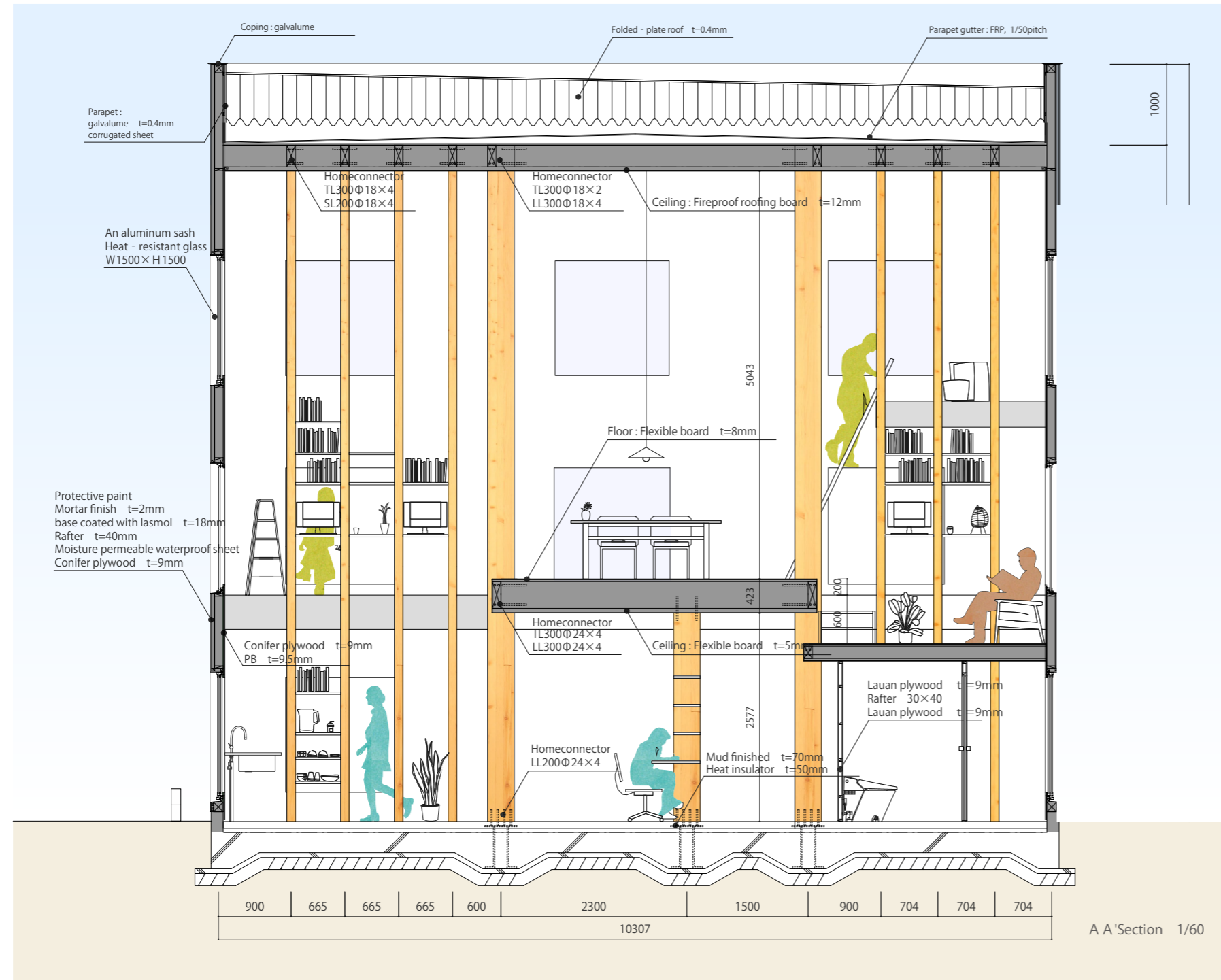
A contrivance, making a big wooden space.



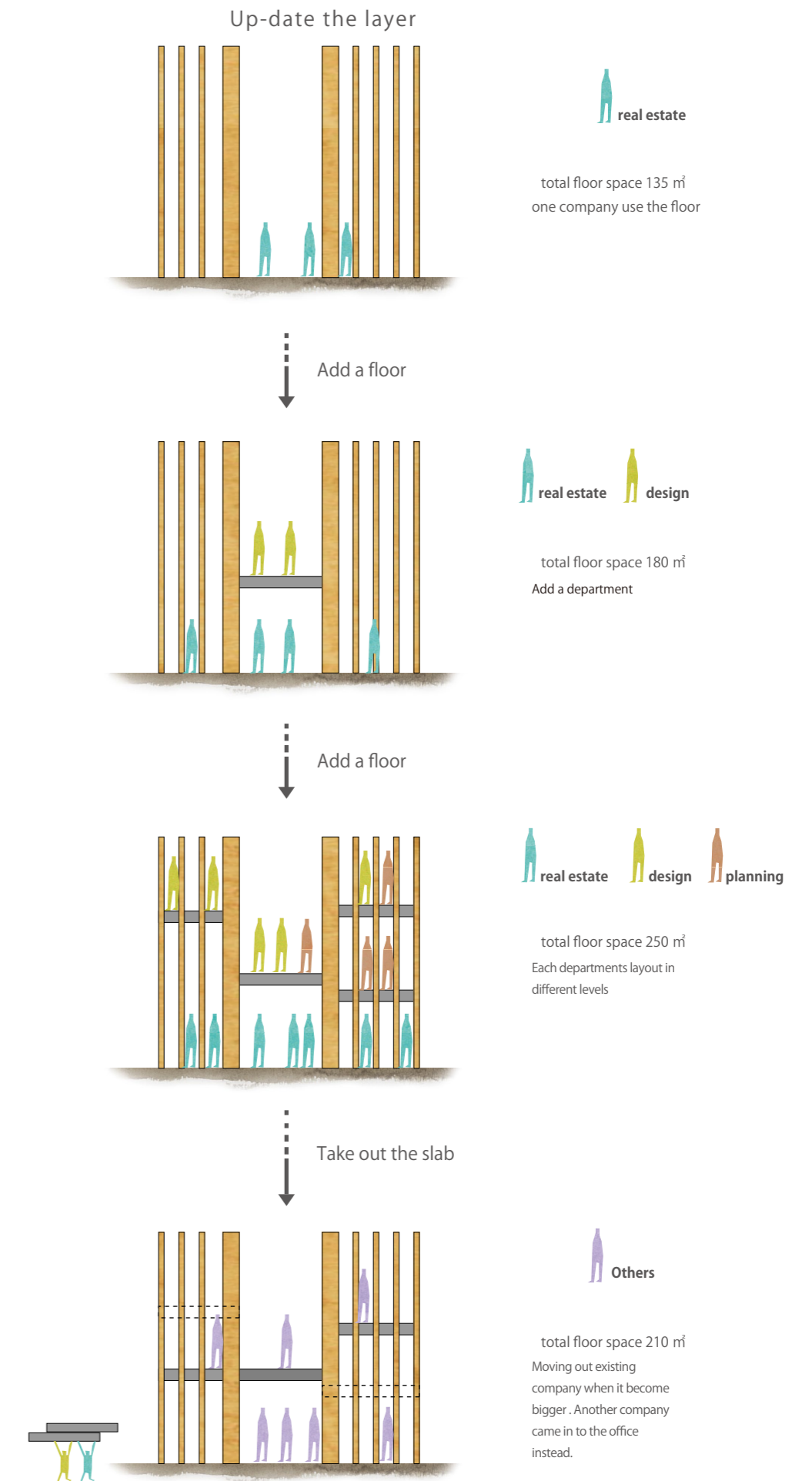
This wooden structure was designed to make use of low-cost, local, and reusable materials. We applied special construction methods and laminated timber with large dimensions that could be rigidly joined between timbers without exposing metallic materials. This realized an integrated space with no load bearing walls inside.



A spatial profile connecting calmly. Increase and decrease floors



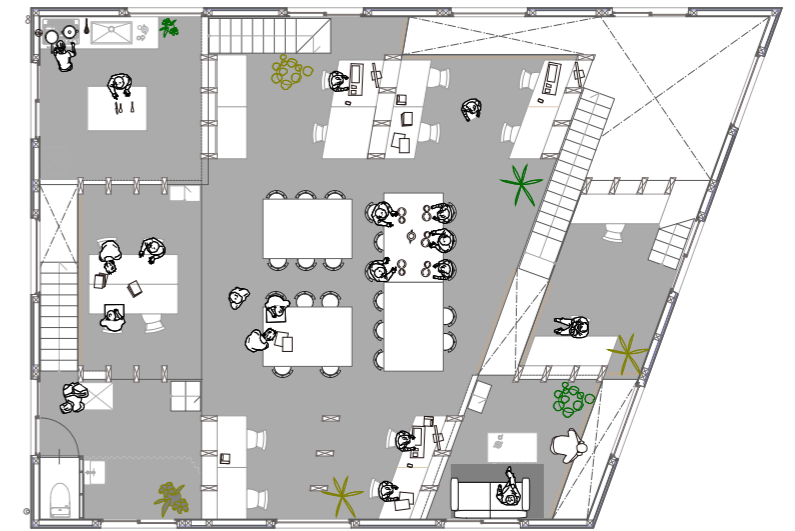
This office has two unique characters. Firstly, free-arrangement of the slabs produced differences in height allowing the staff to choose their own custom spaces in the office. Secondly, it can be adding or reducing slabs by working circumstance.



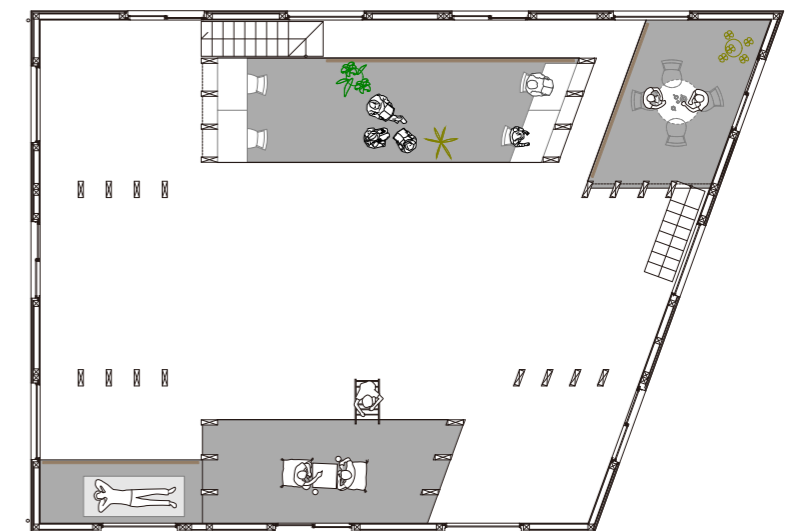
A floor planning at this time



1st floor 1/150

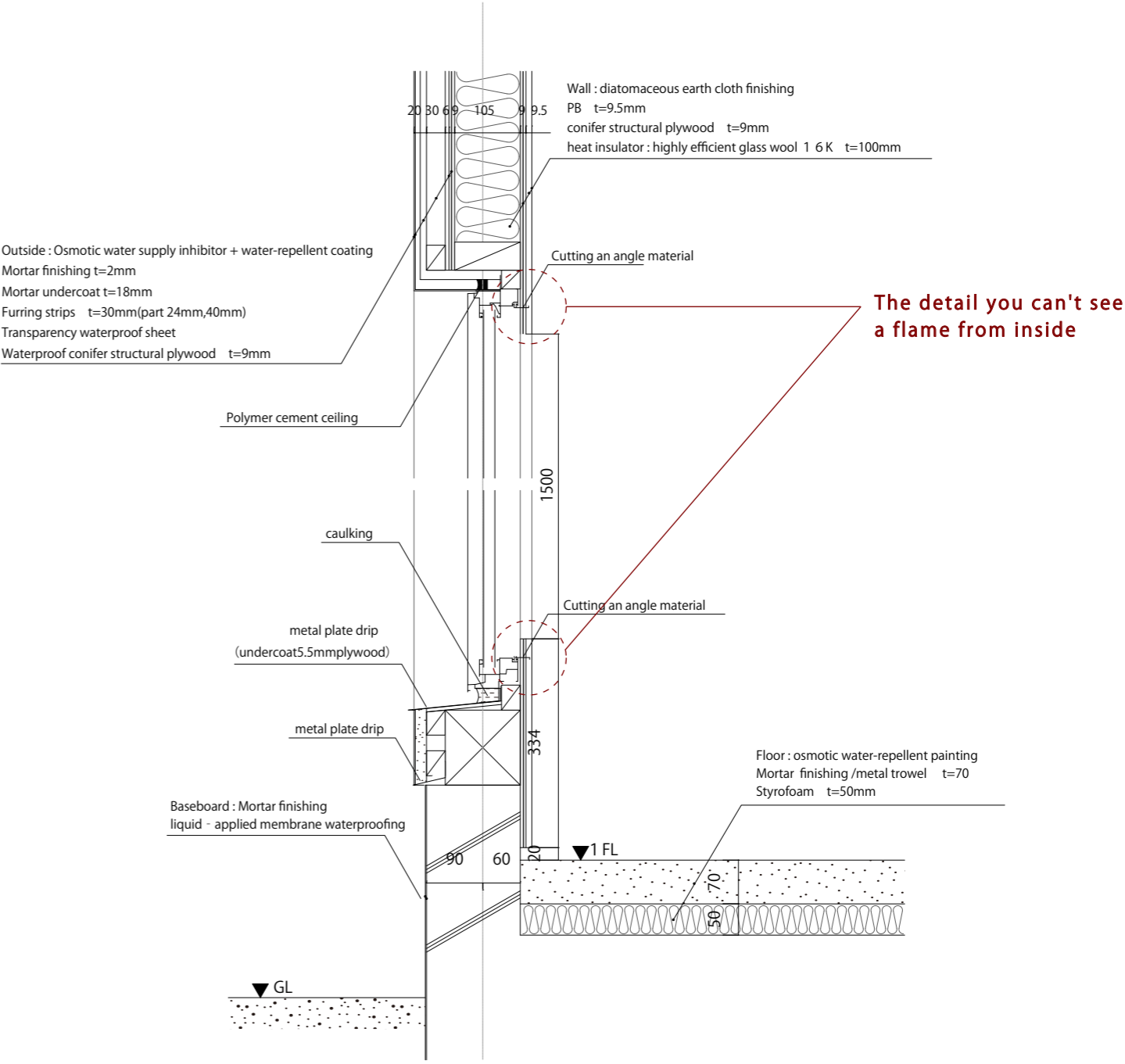


2nd floor 1/150



Loft floor 1/150

Detail of a beautiful opening



Hiding the edge of window, wall went out of mind and connect to outside. Also window-shaped surroundings came up to openings.

symbolism of the building



While cityscape are new, same-sized openings cover all four walls and give a classic look to the main facade, and provide it with the impression of durability.
We hope this distinctive building becomes a symbol of the city.