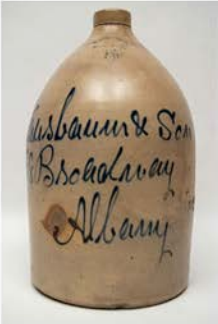




*the* **SEARCH** *for the*  
**PERFECT GROWLER**  
*has* **ENDED**

Classic Amphora shape with the hand written script



simple salt glaze



numbers indicate volume (5 is for 5 gallons) could be 32 or 64 for ounces



ink stamped before firing



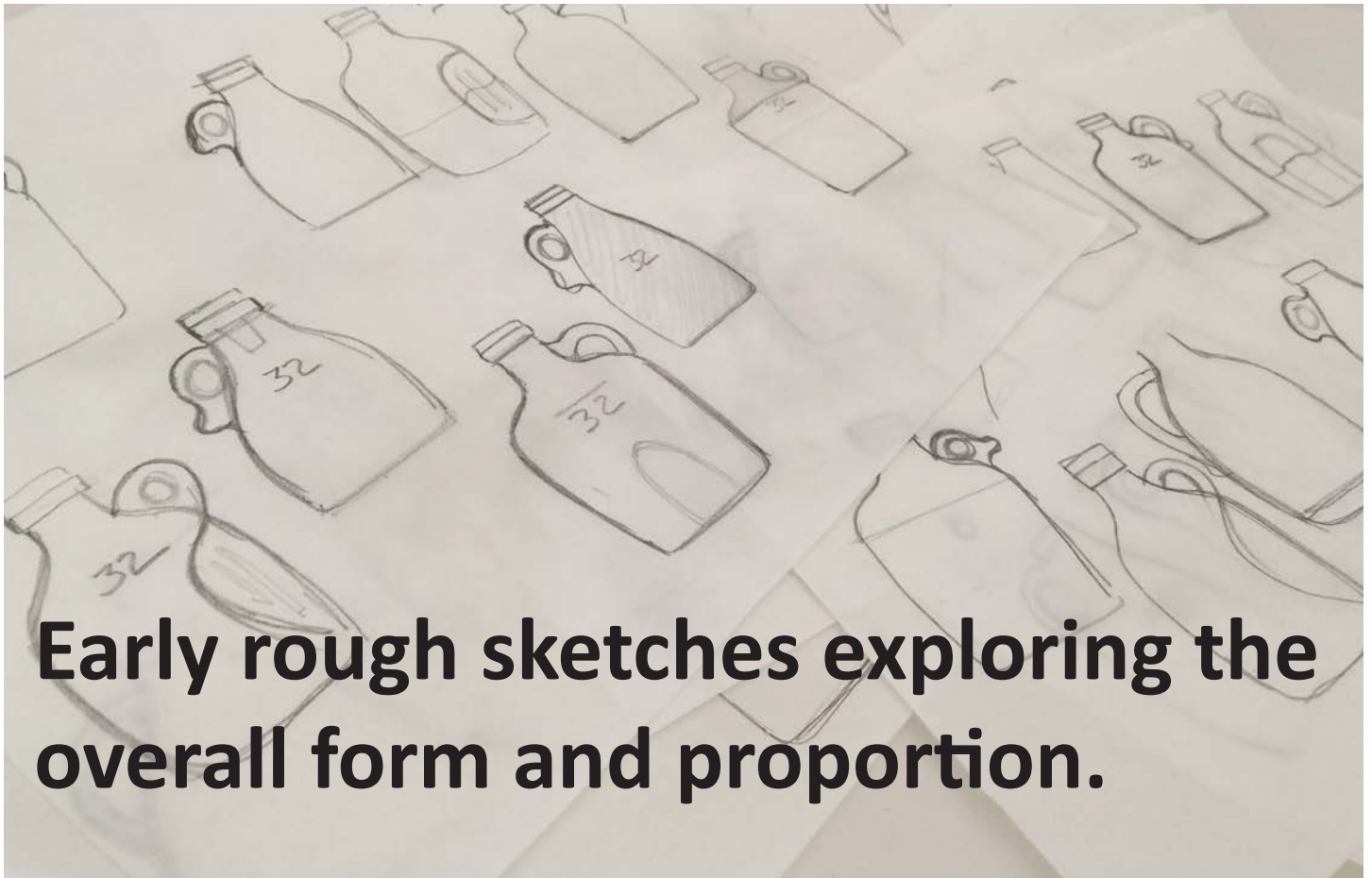
traditional brown and white



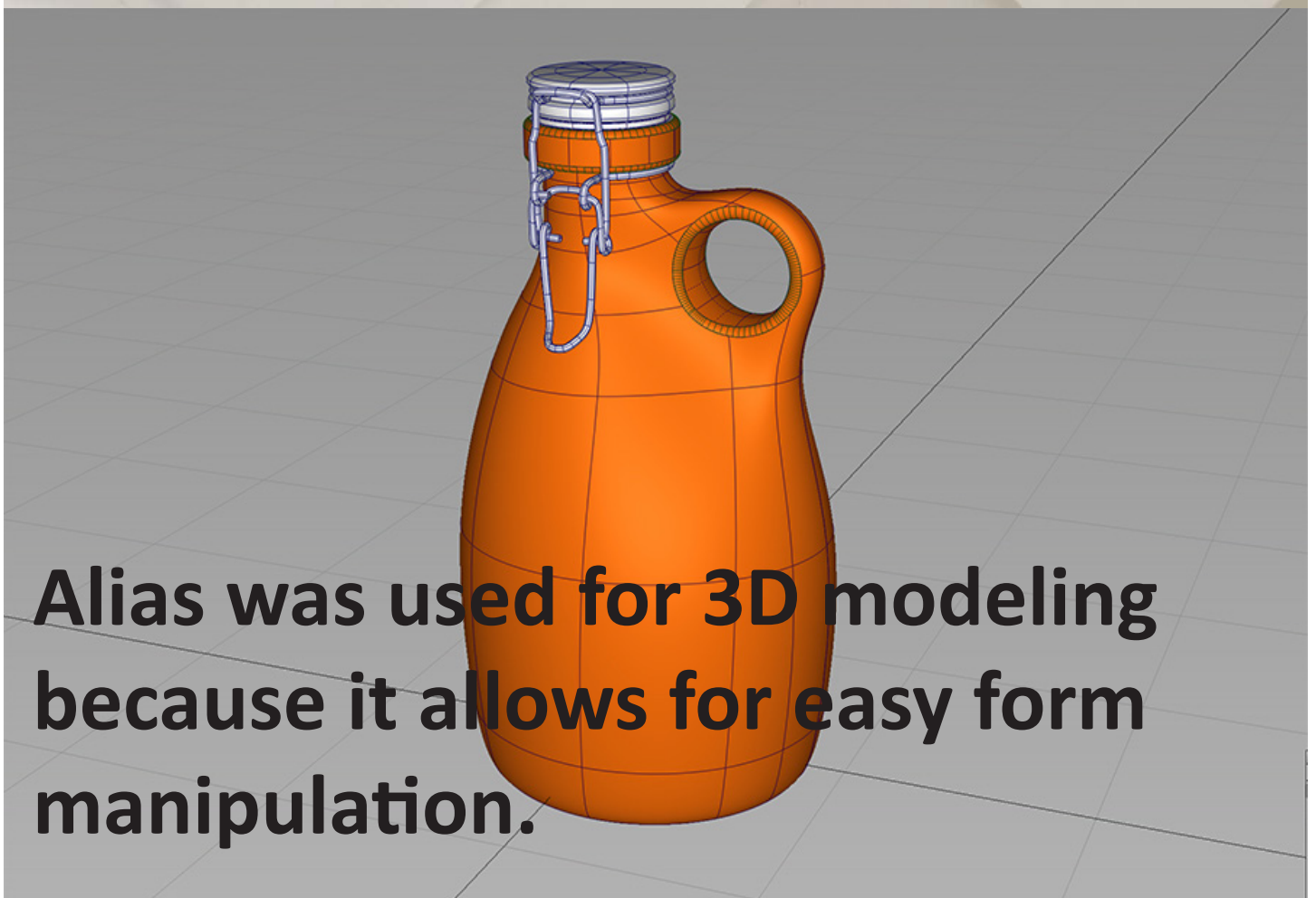
contrasting inside glaze could be cool



\$115.00



**Early rough sketches exploring the overall form and proportion.**



**Alias was used for 3D modeling because it allows for easy form manipulation.**



**Initial renders out of KeyShot.**



**Early 3D prints where we explored different features.**





**Original block mold used for creating samples.**

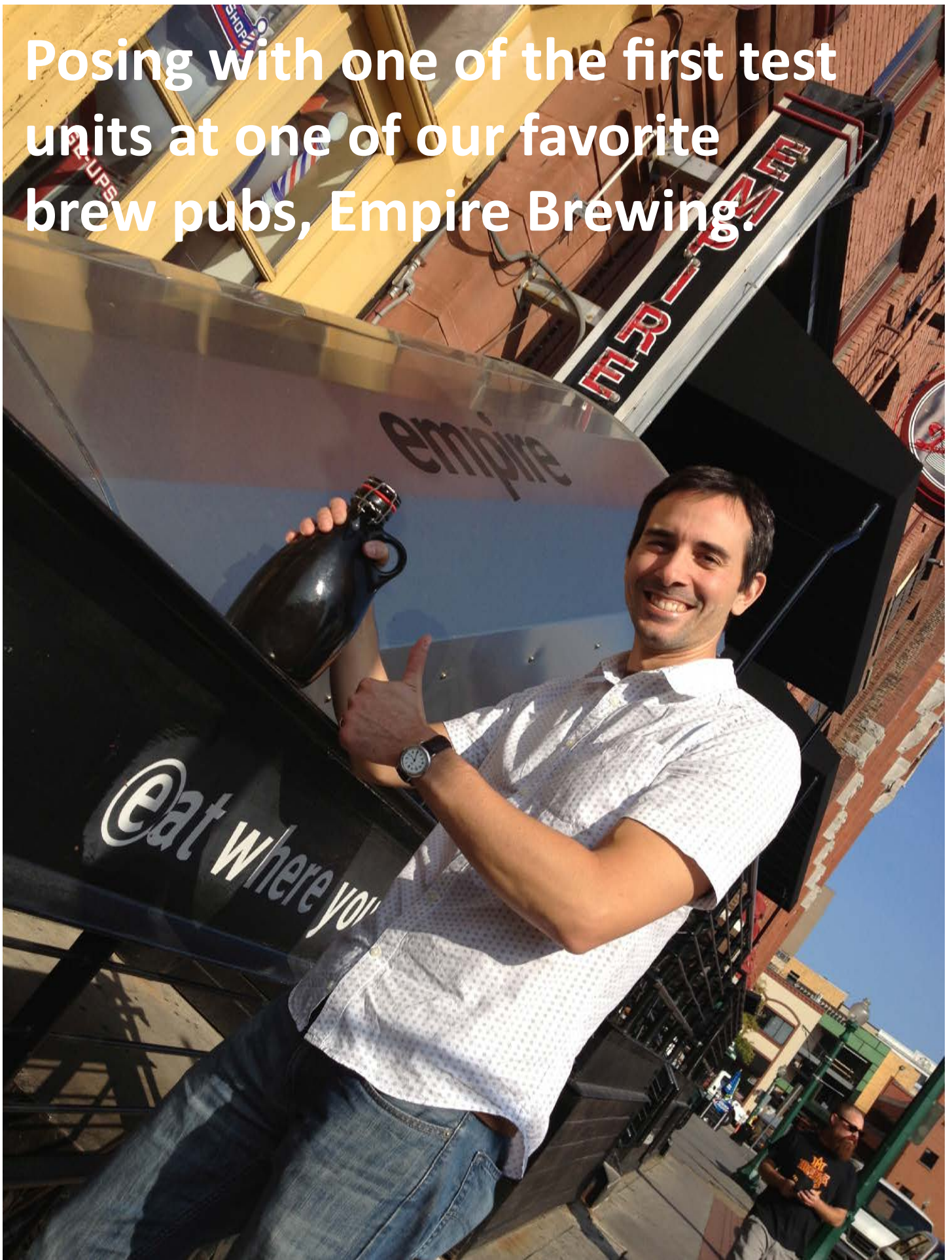




**Rough test pour ready for glaze.**



Posing with one of the first test units at one of our favorite brew pubs, Empire Brewing.








Master Mold used to make production tools.



The slip being mixed.





Freshly poured production tools  
almost ready to open.



Greenware units just out of the  
tools await finishing.





**Cleaning up the seams prior to the bisque firing.**



**Ready for the bisque firing.**



**Glazed units waiting for the final firing in the kiln.**





**Test sample at the first sales event.**



**Final vessels coming out of the kiln.**



**Final production units filled with craft brew.**

