

LightSheer[®] DESIRE[™]

The starting point to
your success.



Grow with Desire



3 Handpieces

2 Advanced technologies

75% Reduce treatment time by more than 75% and minimize treatment discomfort

More and more people desire to have permanent hair reduction. They want a treatment that is **effective, fast and comfortable.**

To meet these needs, Lumenis, a leader in laser and energy based technologies, developed the LightSheer DESIRE so you can:

Benefit from a rapid return on investment

Increase your patient satisfaction

Grow your business

In order to provide you with optimal treatment possibilities, the portable LightSheer DESIRE comes with:

- The "Gold standard" 805nm diode laser
- 3 handpieces with various spot sizes
- 2 advanced technologies
- Upgradable features: add capabilities as your practice grows

The unique features of the LightSheer DESIRE enable you to provide your patients with:

- Short treatment time
- Maximal treatment comfort
- Optimal results

Technology Behind the Desire



2 Cutting Edge Technologies

To deliver unsurpassed clinical results, the LightSheer DESIRE uses the industry's 'Gold Standard' 805 nm diode laser empowered by two advanced technologies: Vacuum Assisted High-Speed Integrated Technology (HIT™) and ChillTip™ Technology.

3 Handpieces for Treating All Body Areas

To effectively treat all body areas the LightSheer DESIRE is equipped with three handpieces that can be easily switched.



The HS has a HIT 22x35mm spot size enabling use of low-fluence and a unique mechanism of pain reduction, providing safe, fast and comfortable treatment.



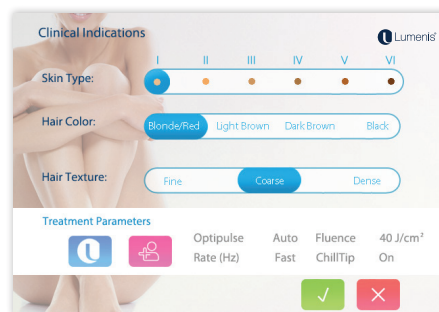
The XC has a Sapphire ChillTip spot size of 12x12mm, providing optimal solution for large and small areas requiring higher fluence levels.



The ET has a Sapphire ChillTip spot size of 9x9mm designed to treat small areas that require maximum precision and high fluence.

Advanced Graphical User Interface

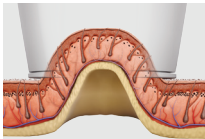
Intuitive presets for fast learning curve and easy treatment delegation.



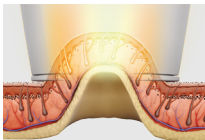
How it Works



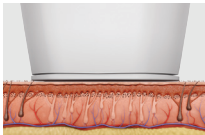
How HIT™ Works



Vacuum gently draws skin into the handpiece, skin is stretched thin and target is pulled closer to the energy source.



Energy is applied to target in which melanocytes are spread apart and blood flow is constricted.



Target is damaged and skin is released.

Advantages of High-Speed Integrated Technology (HIT™)

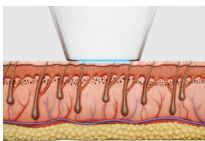
Increased efficacy: reduction in competing chromophores enables delivery of laser energy more efficiently.

Higher safety: less energy is absorbed by the epidermis and lower fluence is required since the target is closer to the energy source.

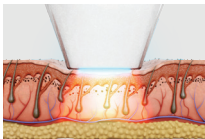
Decreased pain: The unique vacuum mechanism activates tactile and pressure skin receptors to inhibit the transmission of pain sensation.

Fastest treatment: with a spot size of 22x35 mm, large areas can be treated rapidly without the need for cooling or anesthetics.

How ChillTip™ Works



1. Skin is cooled before and during treatment.



2. Skin is compressed. Laser beam applied to skin and target is damaged

Advantages of ChillTip™ Technology

Enhanced safety: superior epidermal protection is achieved through ChillTip contact cooling

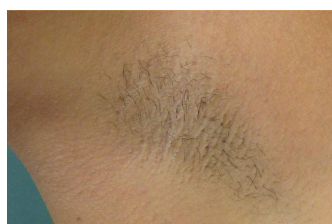
Increased comfort: by continuously cooling the skin, pain and discomfort are significantly reduced.

Higher efficacy: Compression of the skin rotates follicle closer to the surface, blanches blood vessels and reduces competing chromophores. High fluence enables treatment of areas requiring precision and thin, light hair.

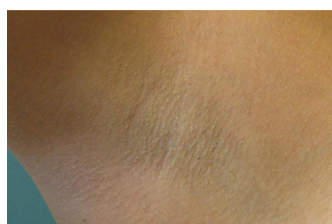
Desirable Clinical Results



The LightSheer technology by Lumenis has been validated in numerous clinical studies and peer reviewed articles. Thousands of satisfied customers have been and are still benefiting from the gold standard performance and patient satisfaction.



Before



After

Courtesy of Girish Munavalli, MD, MHS
Highspeed Handpiece, one year follow-up post 5 treatments



Before



After

Courtesy of Mitch Goldman, MD,
Highspeed Handpiece, 4 month follow-up post 4 treatments

"With the High Speed Technology I can treat large body areas in record time. Using the 22x35 handpiece I can complete treatment on backs and legs in less than 10 minutes. The treatment is very effective, and because of the HIT technology there is no pain.

My customers love the results and recommend it to their friends.

My business turnover has increased."

Mary Lupo, M.D

*"I chose the LightSheer for my practice because it uses an 805 diode which has a proven track record for superior clinical safety and efficacy. I am very pleased with my choice. The results are outstanding and the treatment is most comfortable for the patients. **With the combination of three handpieces utilizing two different technologies, I can give the best treatment to every patient that comes to my office** "...*

Adele Quintana, M.D.

*"The LightSheer is a fast and easy to use device. It is perfect for treating large body areas as well as small and precise ones due to the combination of the High-Speed and the ChillTip, ET & XC, handpieces. **Both the vaccum of the High-Speed and the cooling of the ChillTip combine effective treatments with novel ways to minimize discomfort.** It is a device that both my staff and patients can count on..."*

Omar A. Ibrahim, M.D., Ph.D.

Specifications

Platform	LightSheer DESIRE		
Handpiece	HS	XC	ET

Technical Specifications:

Laser Type	AlGaAs Diode Arrays	AlGaAs Diode Arrays	AlGaAs Diode Arrays
Wavelength	805 nm (nominal)	805 nm (nominal)	805 nm (nominal)
Spot Size	22 mm X 35 mm	12 mm X 12 mm	9 mm X 9 mm
Repetition Rate	Up to 3 Hz	Up to 3 Hz	Up to 3 Hz
Pulse repetition	1 – 3 pulses	1 Pulse	1 Pulse
Fluence	4.5-12 J/cm ²	10-40 J/cm ²	10-100 J/cm ²
Pulse Width	30-400 ms	5-400 ms	5-400 ms
Peak Power	2100 W	1900 W	1600 W
Comfort Management	Vacuum assisted (up to 18inHg)	Chilltip contact cooling (5° C)	
Preset Parameters	Yes	Yes	
On-Site Service	Yes; replaceable handpiece	Yes; replaceable handpiece	

Platform Specifications

Electrical	100-240 VAC, 12 A max. 50/60 Hz. Single-phase grounded outlet
Weight	32 Kg (70.55 lbs.)
Dimensions (WxDxH)	51 x 60 x 42 cm; (20.1 x 23.6 x 16.55 in)

Indications for Use

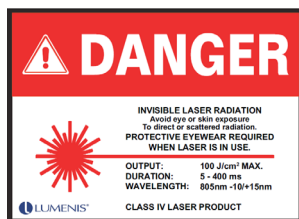
Hair removal, permanent hair reduction, and the treatment for Pseudofolliculitis Barbae (PFB).

Treatment of vascular lesions, including angiomas, hemangiomas, telangiectasia, leg veins and other benign vascular lesions.

Treatment of benign pigmented lesions.

About Lumenis

Lumenis is a global leader in the field of minimally-invasive clinical solutions for the Surgical, Ophthalmology and Aesthetic markets, and is a world-renowned expert in developing and commercializing innovative energy-based technologies, including Laser, Intense Pulsed Light (IPL) and Radio-Frequency (RF). For nearly 50 years, Lumenis' ground-breaking products have redefined medical treatments and have set numerous technological and clinical gold-standards. Lumenis has successfully created solutions for previously untreatable conditions, as well as designed advanced technologies that have revolutionized existing treatment methods in each and every one of the verticals we operate in. Our drive for innovation stems from an uncompromising commitment to improving the health and well-being of our patients; addressing new and growing needs of aging populations; and in offering medical professionals cutting-edge solutions that fit seamlessly into the health-economics environment of the 21st century. The world over, we bring Energy to Healthcare.



AMERICAS

San Jose, CA, USA

T +1 408 764 3000

+1 877 586 3647

F +1 408 764 3999

EMEA

Dreieich Dreieichenhain, Germany

T +49 6103 8335 0

F +49 6103 8335 300

Roma (RM), Italy

T +39 06 90 75 230

F +39 06 90 75 269

Hertfordshire, UK

T +44 20 8736 4110

F +44 20 8736 4119

JAPAN

Tokyo, Japan

T +81 3 6743 8300

F +81 3 6743 8301

ASIA / PACIFIC

Beijing, China

T +86 10 5737 6677

Gurgaon, India

T +91 124 422 07 95

Kowloon, Hong Kong

T +852 217 428 00

F +852 272 251 51



© 2014 All Rights Reserved. The Lumenis Group of Companies. PB-1003139 Rev. E. Lumenis, its logo, LightSheer DESIRE, HIT, ChillTip, are trademarks or registered trademarks of the Lumenis Group of Companies. Specifications are subject to change without notice. Lumenis is ISO 13485:2003 certified. | LightSheer DESIRE is CE approved. | LightSheer DESIRE is FDA cleared.

For more information: www.lumenis.com



AESTHETIC.LUMENIS.COM